

SECURITY & COVERS

AUDIO, VIDEO
& NAVIGATION

INDIAN
& VICTORY

WINDSHIELDS

SEATS &
SISSY BARS

LUGGAGE

SECURITY
& COVERS

TIRES &
WHEELS

BRAKES

CHASSIS

SUSPENSION

SHEET METAL

EXHAUST

FUEL & AIR
SYSTEMS

ENGINE &
OIL FILTERS

PRIMARY DRIVE

TRANSMISSION
& FINAL DRIVE

GASKETS &
HARDWARE

HANDLEBARS
& CONTROL

CABLES

FOOT
CONTROL

INSTRUMENT
& LIGHTING

ELECTRICAL

BATTERIES &
CHARGERS

TRAILERS
& RAMPS

CHEMICALS
& LUBES

TOOLS &
SUPPLIES

GENERAL
ACCESSORIES
& DISPLAY

CROSS
REFERENCE

INDEX



GORILLA™ 9000 CYCLE ALARM WITH REMOTE TRANSMITTER

The Gorilla 9000 Series Cycle Alarm protects your bike with an ultra-loud 120-decibel siren and three powerful sensors. The internal tilt sensor triggers the alarm when the motorcycle is moved off of its side stand. The two-stage shock sensor is adjustable to seven levels of sensitivity and triggers with any impact. The current sensor detects changes in battery voltage and triggers the alarm if the bike is started. Advanced internal digital tilt sensor reacts to any change in angle and requires no setup.

Two-wire, direct-to-battery installation takes less than 30 minutes and requires no special tools. LED warning light indicates that the alarm is armed and acts as a visual deterrent against theft. Waterproof alarm and connectors guard against corrosion. Includes a three-button remote transmitter. Compatible with two-way paging system upgrade P/N 589997.

- Powerful 120-decibel, five-tone siren
- System will accept up to three remotes
- Two-year manufacturer's warranty



P/N	Retail
589995	134.99



GORILLA™ 9100 CYCLE ALARM WITH 2-WAY PAGING SYSTEM

The Gorilla 9100 Cycle Alarm has all the same great features as the 9000; plus, a two-way paging system to alert you when the alarm is triggered from up to a half mile away. Alarm features are displayed on the pager's LCD screen when triggered (Current, Tilt, Shock and Warn Away). Pager features a clock, screen backlight, power save mode, button lock mode and features selectable audible or vibration alerts.



P/N	Retail
589996	269.99

GORILLA™ 1019 PAGER UPGRADE FOR 9000 CYCLE ALARM

Upgrade your 9000 Cycle Alarm system in minutes with this two-way pager upgrade. Monitor your motorcycle's security from up to a half mile away.

- Includes two-way pager remote and two-way antenna module

P/N	Retail
589997	149.99



XENA
INTELLIGENT SECURITY



100102



100103

XENA™ XX-6 SERIES DISC-LOCK ALARM

Steel body with alloy lid. Motion and shock sensor. Push-pin locking system.

- 6 mm pin, 7 mm gap height and 82 mm long
- 42 mm gap length between pin and body for disc

Description	P/N	Retail
Yellow Body	100102	79.95
Stainless Steel Body	100103	79.95
Yellow/Black, Battery pack for XBP4	100135	6.50



XENA™ XX-15 SERIES DISC-LOCK ALARM

Maximum security key and barrel. Freeze spray-resistant. Ultra-high strength. Auto arm/disarm. Shock and movement sensors. Removable alarm module.

- 120-decibel alarm
- 14 mm carbide-reinforced pin, 7 mm gap height
- 60 mm gap length between pin and body for disc
- 100% stainless steel
- Total corrosion resistance
- Double-locking system

Description	P/N	Retail
Stainless Steel Body	100110	109.95
Battery pack XBP4	100135	6.50

XENA™ XX-10 SERIES DISC-LOCK ALARM

Maximum security key and barrel. Freeze spray-proof body and key barrel. Ultra-high strength. Auto arm/disarm. Shock and movement sensors. Removable alarm module.

- 120-decibel alarm
- 10 mm carbide-reinforced pin, 7 mm gap height
- 46 mm gap length between pin and body for disc
- 100% stainless steel
- Total corrosion resistance
- Double-locking system



Description	P/N	Retail
Stainless Steel Body	100104	104.95
Yellow Painted Body	100120	104.95
Battery pack XBP4	100135	6.50



XENA™ XX-14 SERIES DISC-LOCK ALARM

Double-locking barrel system. Hardened-steel and stainless steel body. Motion and shock sensor. Smart LED arming sensor.

- 14 mm double locking pin, 7 mm gap height and 85 mm long
- 44 mm gap length between pin and body for disc

Description	P/N	Retail
Stainless Steel Body	100105	106.95
Battery pack XBP4	100135	6.50



100106



100107

XENA™ XXZ6L SERIES DISC-LOCK ALARM

The world's smallest fully electronic alarmed disc-lock. Light, portable and 120-decibels loud with a versatile 1/4 in., 6 mm pushdown-locking, hardened-steel locking pin.

Description	P/N	Retail
Yellow Steel, Micro Disc	100106	75.95
Stainless Steel, Micro Disc	100107	75.95

AUDIO, VIDEO & NAVIGATION

INDIAN & VICTORY

WINDSHIELDS

SEATS & SISSY BARS

LUGGAGE

SECURITY & COVERS

TIRES & WHEELS

BRAKES

CHASSIS

SUSPENSION

SHEET METAL

EXHAUST

FUEL & AIR SYSTEMS

ENGINE & OIL FILTERS

PRIMARY DRIVE

TRANSMISSION & FINAL DRIVE

GASKETS & HARDWARE

HANDLEBARS & CONTROL

CABLES

FOOT CONTROL

INSTRUMENT & LIGHTING

ELECTRICAL

BATTERIES & CHARGERS

TRAILERS & RAMPS

CHEMICALS & LUBES

TOOLS & SUPPLIES

GENERAL ACCESSORIES & DISPLAY

CROSS REFERENCE

INDEX

SECURITY & COVERS

AUDIO, VIDEO
& NAVIGATION

INDIAN
& VICTORY

WINDSHIELDS

SEATS &
SISSY BARS

LUGGAGE

SECURITY
& COVERS

TIRES &
WHEELS

BRAKES

CHASSIS

SUSPENSION

SHEET METAL

EXHAUST

FUEL & AIR
SYSTEMS

ENGINE &
OIL FILTERS

PRIMARY DRIVE

TRANSMISSION
& FINAL DRIVE

GASKETS &
HARDWARE

HANDLEBARS
& CONTROL

CABLES

FOOT
CONTROL

INSTRUMENT
& LIGHTING

ELECTRICAL

BATTERIES &
CHARGERS

TRAILERS
& RAMPS

CHEMICALS
& LUBES

TOOLS &
SUPPLIES

GENERAL
ACCESSORIES
& DISPLAY

CROSS
REFERENCE

INDEX



XENA™ X1 AND X2 DISC LOCKS

Freeze spray-proof body and barrel. Maximum security key and barrel.

- X-1 has 6 mm pin
- X-2 has 14 mm pin
- Double-locking system
- Yellow, solid steel body

Description	P/N	Retail
X-1, 1/4" Pin	100108	37.95
X-2, 1/2" Pin	100109	42.95



XENA™ CHAIN

Xena™ security chain is inert-gas hardened steel to resist theft attacks.

- XCH10, 10 mm with pull-through loop
- XC14, 14 mm chain

Type	Style	Color	Length	P/N	Retail
10 mm Chain with Loop	XCH10-120L	Gold	3.9'	100128	89.95
14 mm Chain	XC14-150L	Silver	5'	100130	119.95

XENA™ XBP4 BATTERY PACK

CR2 Battery for use in all XENA XX Series and XZZ6L Disc-Lock Alarms.

P/N	Retail
100135	6.50



XENA™ XCA 15 CHAIN ADAPTOR

Unique XENA patented design works with the XX15 Disc-Lock Alarm to anchor motorcycle with chain and Disc-Lock Alarm.

- Disc-Lock and Chain sold separately

P/N	Retail
100131	20.95



100121

100122



100125

XENA™ STAINLESS STEEL U-LOCKS

Total corrosion resistance. Stainless steel body. Anti-twist shackle. Maximum security key.

- 5/8 in. (16 mm), 3/4 in. (18 mm) hardened-steel U-bar

Style	Length	P/N	Retail
XSU69	2.7"	100121	99.00
XSU102	4.0"	100122	114.95
XSU310	12.2"	100125	129.95



100132



100133

XENA™ CABLE ADAPTOR SET

Unique XENA patented design works with the XX6 and XZZ6L. Use Disc-Lock Alarm to anchor motorcycle with 59 in. (150 cm) cable.

- Disc-lock sold separately

Style	Locks	P/N	Retail
XXA150	XX6, XGA	100132	29.95
XZA150	XZZ6L, XGA	100133	29.95

XENA™ XGA GROUND ANCHOR

Ideal for securing motorcycles, trailers, quad bikes, jet skis and more. High-performance XGA single-bolt fixing ground anchor. Installs in minutes. High-security, high-grade steel anchor swings through 360° for added convenience.

P/N	Retail
100126	104.95





EXCLUSIVE

BULLY LOCKS™ PADLOCK WITH CABLE

Cable and lock are coated with black vinyl to protect bike's finish. Hardened-steel padlock shackle.

- 6 ft. x 10 mm self-coiling cable

P/N	Retail
132204	11.95



EXCLUSIVE

BULLY LOCKS™ 10 MM CABLE LOCK

Excellent for watercraft, snowmobiles and motorcycles.

- 6 ft. self-coiling cable
- Black vinyl-coated, integrated lock
- Snap-shut with swiveling head

P/N	Retail
132206	14.95



EXCLUSIVE

BULLY LOCKS™ 20 MM CABLE LOCK

Easy-to-use, built-in lock with swiveling locking head. Tougher than armored cable locks.

- 6 ft. self-coiling cable
- Over 200 strands of super-strong tempered steel

P/N	Retail
132208	44.95



EXCLUSIVE

BULLY LOCKS™ 10 MM STRAIGHT CABLE

Easy-to-use with Bully Locks.

- 7 ft. x 10 mm flexible braided cable
- Straight cable with closed loops at ends

P/N	Retail
132203	11.95



EXCLUSIVE

BULLY LOCKS™ 15 MM CABLE LOCK

Easy-to-use, built-in lock with swiveling locking head. Tougher than armored cable locks.

- 6 ft. self-coiling cable
- Over 200 strands of super-strong tempered steel

P/N	Retail
132207	29.95



EXCLUSIVE

BULLY LOCKS™ VIPER

PVC-coated, super-strong, hardened, alloy steel chain links. Integrated zinc alloy hardened-steel lock with three keys, one lighted. Anti-drill steel plate. Keyhole cover keeps dirt out to ensure smooth operation.

- 5-1/2 ft. x 30 mm

P/N	Retail
132235	49.95



EXCLUSIVE

BULLY LOCKS™ BLACK MAMBA

5-1/2 ft. super-strong, hardened, alloy steel 12 mm x 12 mm chain links with nylon cover. Integrated zinc alloy hardened-steel lock with three keys, one lighted. Anti-drill steel plate. Keyhole cover keeps dirt out to ensure smooth operation.

P/N	Retail
132236	74.95



EXCLUSIVE

BULLY LOCKS™ 5-1/2 FT. CHAIN

Super-strong, hardened alloy steel 12 mm x 12 mm chain links with nylon cover.

Description	P/N	Retail
5-1/2', 12 mm x 12 mm	132231	39.95
Polished, Lock Adaptor	132264	7.95



EXCLUSIVE

BULLY LOCKS™ PRESSING DISC LOCK

Easy-to-carry, easy-to-store effective security. Press down locking system allows effortless installation on brake disc. 5.5 mm locking pin fits most disc brake holes. Throat opening is 6 mm wide and 22 mm long to the locking pin. Zinc alloy lock body for superior protection from the elements.

Note: Remove lock from brake disc prior to every ride.

P/N	Retail
132254	29.95

SECURITY & COVERS



EXCLUSIVE

BULLY LOCKS™ GRIP LOCK

Simplicity and high-visibility make the Bully Grip Lock one of the best theft deterrents available on the market. Unlike disc locks, you can't forget it's in place; no more bike damage because of a forgotten disc lock. Fits virtually any motorcycle with a handlebar mounted brake lever. Adjustable for 27-38 mm grips and brake lever lengths. Made from case-hardened steel with reinforced nylon housing for added protection.

Color	P/N	Retail
Yellow	132255	79.95
Black	132256	79.95
Red	132270	79.95



132257



132258



EXCLUSIVE

BULLY LOCKS™ PREMIUM DISC LOCK

Clear-coat brushed finish gives a distinctive look. Precision, top-of-the-line tumblers for smooth locking functionality. Potent theft deterrence that is easy to carry when not in use. Nickel plating provides corrosion protection. 5-1/2 mm pin fits most disc vent holes.

- Available with 12 mm throat (standard) or 37 mm throat (long)

Note: Remove lock from brake disc prior to every ride.

Description	P/N	Retail
Standard Disc Lock	132257	29.95
Long Throat Disc Lock	132258	34.95



EXCLUSIVE

BULLY LOCKS™ U DISC LOCK

Versatile U-shaped shackle can be used with a cable or on its own. 12.7 mm heat-treated steel shackle for superior theft protection. Dual-locking pins for added security. Auto-turn locking system releases key when shackled. Cam-style dust cover protects and extends cylinder life.

Note: Remove lock from brake disc prior to every ride.

P/N	Retail
132252	29.95



EXCLUSIVE

BULLY LOCKS™ CARBON DISC/PADLOCK

Protect your ride from the bad guys with this massive deterrent. 12 mm heat-treated steel shackle for superior theft protection. Dual-locking pins for added security. Can be used as a disc lock or padlock. Auto-turn locking system releases key when shackle is locked. Sliding-steel dust cover protects and extends cylinder life. Steel support plate adds extra protection against cylinder.

Note: Remove lock from brake disc prior to every ride.

P/N	Retail
132253	59.95



EXCLUSIVE

BULLY LOCKS™ 5.5 MM DISC LOCK

Made of hardened, forged steel for top security. Snap-shut locking mechanism. High-security cylinder with anti-drill ball pin.

- 5.5 mm pin fits smaller disc vent holes

Note: Remove lock from brake disc prior to every ride.

Description	P/N	Retail
Red	132246	19.95
Yellow	132247	19.95
Chrome	132248	21.95



EXCLUSIVE

BULLY LOCKS™ 10 MM DISC LOCK

Made of hardened, forged steel for top security. High-security cylinder with anti-drill ball pin. 10 mm hardened-steel lock pin. Yellow and red locks have a vinyl-coated body for protection.

Note: Remove lock from brake disc prior to every ride.

Description	P/N	Retail
Red	132249	24.95
Yellow	132250	24.95
Chrome	132251	26.95





EXCLUSIVE

BULLY LOCKS™ BILLET STEEL ALARM DISC LOCK

110-decibel screamer. Milled from billet steel. 8 mm hardened steel pin. Anti-pick lock. Movement sensor integrated right into the lock. Electronics sealed against moisture. Keyhole cover protects against dust and dirt. Lighted key to assist you at night. Nylon protective carry bag included. Beautifully plated and polished finish. Drill- and saw-resistant. Note: Remove lock from brake disc prior to every ride.

P/N	Retail
132243	59.95



EXCLUSIVE

BULLY LOCKS™ ALARM LOCK WITH PAGER

No expensive installation costs. No complicated spaghetti of wiring added to your bike. No cutting into your bike's wiring harness. No drain on your battery. A horn sounds if the thief tries to cut the hoop. Equipped with a pager alarm that will alert you when someone moves your bike. Just attach, turn it on and walk away.

P/N	Retail
132245	149.95

EXCLUSIVE

BULLY LOCKS™ HARDENED-STEEL TRAILER HITCH LOCK SET

Class III hitch package protection that locks the hitch coupler and receiver. Beautifully finished matching pair and no fumbling for different keys since they are keyed alike.

- Hardened-steel pins
- 2-3/4 in. shackle length fits 2 in. square receivers
- 1/2 in. pin fits lever coupler hitch styles
- Anti-pick locks

P/N	Retail
132242	24.95



EXCLUSIVE

BULLY LOCKS™ DISC LOCK REMINDER

Lightweight, easy-to-pack, yellow coiled cable. Two looped-ends; one for disc lock, the other for handgrip. Never ride off with your disc lock on your brake rotor again.

P/N	Retail
132202	5.95



EXCLUSIVE

BULLY LOCKS™ LI'L BULLY

5.5 mm or 10 mm disc lock for motorcycles. Constructed with heat-treated alloy steel to resist cutting. Hardened anti-drill discs. 5.5 mm pin fits smaller disc vent holes.

- Includes pouch and three keys, one lighted key

Note: Remove lock from brake disc prior to every ride.

Color	Size	P/N	Retail
Orange	5.5 mm	132222	18.95
Chrome	5.5 mm	132223	20.95
Orange	10 mm	132224	19.95
Chrome	10 mm	132225	24.95



EXCLUSIVE

BULLY LOCKS™ LOCK JAWS

A must for securing your ATV or trailer at home, on the trail or on the road. Hardened-steel resists cutting. Ratchet adjusts to fit up to an 11 in. wide wheel and is 6 in. deep. Sized for ATVs and trailers. Rubber-coated arms to protect wheel finishes. Anti-pick lock.

- Reminder lanyard included

P/N	Retail
132239	64.95

NEW! EXCLUSIVE

BULLY LOCKS™ RETRACTING COMBO ACCESSORY LOCK

Convenient retractable security cable adjusts with a push of a button. Resettable four digit combination lock means you will never lose your key. Program your favorite numbers so you never forget access code. Easy to stow and carry, three foot coated cable, for long service life. Perfect for locking your valuable accessories.

P/N	Retail
132263	19.95



EXCLUSIVE

BULLY LOCKS™ STAINLESS ROUND PADLOCK

Armor-protected and case-hardened steel shackle. Deadbolt locking. Deep welded body stands up to the elements.

- 2-3/4 in. diameter (70 mm)

P/N	Retail
132201	13.95



AUDIO, VIDEO & NAVIGATION

INDIAN & VICTORY

WINDSHIELDS

SEATS & SISSY BARS

LUGGAGE

SECURITY & COVERS

TIRES & WHEELS

BRAKES

CHASSIS

SUSPENSION

SHEET METAL

EXHAUST

FUEL & AIR SYSTEMS

ENGINE & OIL FILTERS

PRIMARY DRIVE

TRANSMISSION & FINAL DRIVE

GASKETS & HARDWARE

HANDLEBARS & CONTROL

CABLES

FOOT CONTROL

INSTRUMENT & LIGHTING

ELECTRICAL

BATTERIES & CHARGERS

TRAILERS & RAMPS

CHEMICALS & LUBES

TOOLS & SUPPLIES

GENERAL ACCESSORIES & DISPLAY

CROSS REFERENCE

INDEX

SECURITY & COVERS

ONGUARD® LOCKS

Dual or quatro lock-down deadbolt locking mechanism offers second-to-none holding power.

- M-cylinder mechanism is more reliable and user-friendly
- Key mechanism prevents the key from being turned before being fully inserted into the cylinder, eliminating the problem of damaged keys or tumblers
- Ballistic plastic is guaranteed to hold up to the most aggressive trashing and thrashing
- Most locks include four laser-cut keys with one lighted key for nighttime use
- Manufacturer's anti-theft protection, where available, for up to three year's coverage; provides protection in connection with your insurance deductible toward replacement of your powersport vehicle up to the designated dollar amount should the product fail when used properly
- Lifetime manufacturer's warranty; if a mechanical defect occurs, it will be replaced free of charge
- Key Replacement Service: register or provide your key number and two replacement keys will be replaced free of charge
- Re-tooled lock internals with tighter tolerances
- High-grade materials for superior weather resistance and smoother operation
- Bright coatings and color scheme sends clear warning to thieves



187012

187011

ONGUARD® BEAST SERIES

Highest security rating for maximum protection in high-crime areas. Massive 12-14 mm hex link steel chain with titanium reinforcements are almost impossible to cut or break. Beast locks have quatro or dual lock mechanisms featuring Dual Lockdown Protection where hardened-steel pins engage both ends of the shackle creating a redundant locking system for added security. Locks also feature rubber end caps and vinyl coatings to protect finishes. Reinforced sleeve over crossbar and cylinder for additional security. Water- and heat-resistant chain embroidered cover prevents scratching and allows compact coiling. Rotating dust cover protects cylinder.

- Anti-theft protection plan



Chain	Lock	Length	P/N	Retail
14 mm	Disc Lock	6'	187014	189.95
14 mm	Disc Lock	3' 7"	187012	149.95
12 mm	Beast Padlock	3' 7"	187011	109.95
12 mm	Beast Padlock	6'	187015	149.95
12 mm	Chain Only	7'	187016	139.95

ONGUARD® BEAST PADLOCK

X2P dual locking mechanism. 11 mm (0.43 in) ultra-hardened steel shackle. Five laser-cut keys, one with an LED microlight. Z-cylinder resists all attacks from picking, pulling or drilling.

P/N	Retail
187017	34.95



ONGUARD® TERRIER COMBO ACCESSORY LOCK

6 mm, 7 ft. with combination lock that allows you to set your own four-digit combination. Vinyl-coated cable protects surface and edges. Hook-and-loop strap compacts cable to pocket size for easy carrying. Ideal for helmets and jackets or added security for bike, backpack, luggage and other accessories.

P/N	Retail
187046	16.95



ONGUARD® BEAST SERIES LOOP AND T

Highest security rating for maximum protection in high-crime areas. Prevents ride-away, rollaway and carry-away theft. X2P dual lockdown protection with a massive 12 mm hex link chain and pass through ring made from cut-resistant, ultra-hardened steel for amazing versatility in tricky, hard-to-lock situations. Most versatile powersports lock, use the loop to wrap around a solidly anchored object, then run the 10 in. long steel bar through a hole on your vehicle and lock the T-head on the other side. Locks also feature rubber end caps and vinyl coatings to protect finishes. Reinforced crossbar sleeve and cylinder for additional security. Water- and heat-resistant embroidered chain cover prevents scratching and allows compact coiling. Rotating dust cover protects cylinder.

- Anti-theft protection plan
- 12 mm chain 4-1/2 ft. with loop and T-lock



P/N	Retail
187013	114.95

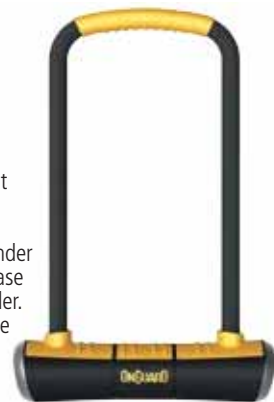


ONGUARD® PITBULL LS

Unique OnGuard cylinder offers optimum resistance against physical attacks and picking. 14 mm massive ultra-hardened steel shackle provides maximum cut resistance. Reinforced crossbar sleeve and cylinder for additional security. Triple-layer steel crossbar. X4P Quatro bolt locking mechanism pins both ends of the steel shackle in four places to withstand more than eight tons of pull force. M-cylinder provides an added level of security and ease of use. Rotating dust cover protects cylinder. Protective vinyl coating on shackle. Double rubber coating on crossbar.

- Anti-theft protection plan
- 14 mm U-Lock is 4-1/2" x 11-1/2"

P/N	Retail
187040	59.95



ONGUARD® BULLDOG SERIES

Dual-bolt locking mechanism with dual lockdown protection drives two hardened pins into the 13 mm ultra-hardened steel shackle at both ends creating a double lock that can withstand six tons of pull force. Improved M-Cylinder lock mechanism. Protective vinyl coating on shackle. Double-rubber coating on crossbar.

- 13 mm U-lock is 3-1/2" x 5-1/2"
- 10 mm x 4 ft. cable
- X2P dual locking mechanism

P/N	Retail
187028	39.95





ONGUARD® MASTIFF SERIES

10 mm hex link steel chain and square bar links are titanium reinforced to resist attacks from saws and cutters. X4P and X2P locking mechanisms feature four- or two-point lockdown protection. Quatro and dual lock mechanisms feature dual lockdown protection. Reinforced sleeve over crossbar and cylinder for additional security. Locks have vinyl-coated, large-diameter, ultra-hardened steel shackles and rubber-coated end caps. Water- and heat-resistant embroidered chain cover prevents scratching and allows compact coiling.

- Anti-theft protection plan



Chain	Lock	Length	P/N	Retail
10 mm	14 mm Disc Lock	3' 6"	187036	94.95
10 mm	14 mm Disc Lock	6'	187038	124.95
10 mm	Integrated Lock	3' 6"	187035	89.95
10 mm	Integrated Lock	6'	187039	114.95
10 mm	13 mm Disc Lock	4' 3"	187037¹	109.95

¹ Cinch loop chain



ONGUARD® ROTTWEILER SERIES

Lighter weight, flexible cable lock with the increased security and the cut resistance of hardened-steel armor. Integrated lock has X2P dual lock mechanisms for ultimate pull resistance. Reinforced sleeve over crossbar and cylinder for additional security. Tough vinyl-cable cover protects against scratches. Automatic dust cover protects cylinder.

- Includes three laser-cut keys and one lighted key for nighttime use

Cable	Length	P/N	Retail
20 mm	3' 3"	187041	39.95
25 mm	4'	187043	59.95
25 mm	6'	187044	74.95
30 mm	3' 5"	187042	84.95
30 mm	7'	187045	139.95



ONGUARD® BRUTE TRI-RADIUS SERIES

16.8 mm massive ultra-hardened steel shackle provides maximum cut resistance. Unique OnGuard cylinder offers optimum resistance against physical attack and picking. Reinforced sleeve over crossbar and cylinder for additional security. Triple-layer steel crossbar. X4P Quatro bolt locking mechanism pins both ends of the steel shackle in four places to withstand more than eight tons of pull force. Rotating dust cover protects cylinder. Protective vinyl coating on shackle. Double rubber coating on crossbar. Anti-theft protection plan.

Type	Size	Dimensions	P/N	Retail
Long	16.8 mm	4.37" x 10.24"	187026	79.95
Standard	16.8 mm	4.53" x 7.96"	187027	74.95



ONGUARD® DOBERMAN SERIES

Heavy-duty, self-coiling cable. Integrated locks feature X2P dual lock mechanisms for ultimate pull resistance. Combination locks with ergonomic dials are user-friendly and resettable with 10,000 variations. Reinforced sleeve over crossbar and cylinder for additional security. Tough vinyl-cable cover protects against scratching. Automatic dust cover protects cylinder. Double rubber coating. Convenient strap for compact storage. The Combo Glo features a built-in microlight to backlight the tumblers for easy reading after dark.

Cable	Lock	Length	P/N	Retail
10 mm	Integrated Lock	6'	187030	22.95
12 mm	Combination Lock	6'	187031	24.95
12 mm	Combo Glo	6'	187033	29.95
12 mm	Integrated Lock	6'	187029	24.95
15 mm	Combination Lock	6'	187032	34.95

AUDIO, VIDEO
& NAVIGATION

INDIAN
& VICTORY

WINDSHIELDS

SEATS &
SISSY BARS

LUGGAGE

SECURITY
& COVERS

TIRES &
WHEELS

BRAKES

CHASSIS

SUSPENSION

SHEET METAL

EXHAUST

FUEL & AIR
SYSTEMS

ENGINE &
OIL FILTERS

PRIMARY DRIVE

TRANSMISSION
& FINAL DRIVE

GASKETS &
HARDWARE

HANDLEBARS
& CONTROL

CABLES

FOOT
CONTROL

INSTRUMENT
& LIGHTING

ELECTRICAL

BATTERIES &
CHARGERS

TRAILERS
& RAMPS

CHEMICALS
& LUBES

TOOLS &
SUPPLIES

GENERAL
ACCESSORIES
& DISPLAY

CROSS
REFERENCE

INDEX

SECURITY & COVERS



ONGUARD® AKITA SERIES

Strongest, most flexible and cut-resistant cables in the business. Heavy-duty extra flexible steel cable. Integrated locks feature X2P dual lock mechanisms for ultimate pull resistance. Tough vinyl-cable cover protects against scratching. Automatic dust cover protects cylinder. Double-rubber coating. Convenient strap for compact storage.

Cable	Lock	Length	P/N	Retail
10 mm	Cable Only	4'	187006	8.95
10 mm	Cable Only	7'	187007	12.95
10 mm	Cable Only	15'	187009	19.95
10 mm	Cable Only	30'	187010	34.95
12 mm	Combination Lock	6'	187008	22.95
12 mm	Integrated Lock	6'	187005	20.95
12 mm	Integrated Lock	10'	187000	25.95
15 mm	Integrated Lock	3-1/4'	187001	32.95
20 mm	Integrated Lock	3-1/4'	187002	44.95
20 mm	Integrated Lock	6'	187004	62.95

ONGUARD® BOXER SERIES 5.5 MM STAPLE STYLE DISC LOCK

Stapler-style disc lock featuring touch lock system secured by a pick-pull and drill-resistant Z-Cylinder locking mechanism. 5.5 mm (0.2 in.) hardened-steel pin secures lock to disc. Flip-open keyway keeps lock internals clean and operating smoothly. Additional opening provides convenient place for another cable or lock.

- Includes two keys and carrying pouch

P/N	Retail
187024	29.99

ONGUARD® DOUBLE TEAM COMBO PAK LOCK

This lock is the ultimate theft resistance for high-crime areas. Contains four of the most popular items in one pack.

- Includes three laser-cut keys; plus, one lighted key for nighttime, 10 mm pin with pouch, terrier combo accessory lock, boxer disc reminder and carrying pouch

P/N	Retail
187034	49.95



ONGUARD® TERRIER ROLLER CABLE COMBINATION LOCK

Cable lock for your backpack, luggage and other accessories. Raised combination dials are easy-to-use with gloves. Set your own three digit combination. Unique roll-up system retracts cable to pocket-size for easy carrying. 36 in. steel, vinyl-coated cable stays flexible even in freezing weather.

P/N	Retail
187047	19.95



ONGUARD® BOXER DISC REMINDER

P/N	Retail
187025	4.95



ONGUARD® BOXER SERIES 16.8 MM LOCK

Quatro locking mechanism, armored hardened-steel case, touch lock system and special titanium plating. Includes three laser-cut keys; plus, one lighted key for nighttime use. This lock is the ultimate theft resistance for high-crime areas.

- Carrying pouch with belt clip and reminder cable included
- 55 mm (2.17 in.) x 55 mm (2.17 in.) opening inside 16.8 mm (0.66 in.) shackle, 3 lbs.

P/N	Retail
187023	57.95



ONGUARD® BOXER SERIES 14 MM LOCK

X4 Power Quatro bolt locking mechanism, armored hardened-steel case, touch lock system and special titanium plating. Includes three laser-cut keys; plus, one lighted key for nighttime use. Five Star plus security level rating makes this lock the ultimate theft resistance for high-crime areas.

- Carrying pouch with belt clip and reminder cable included
- 55 mm (2.17 in.) x 55 mm (2.17 in.) opening inside 14 mm (0.55 in.) shackle, 3 lbs.

Color	P/N	Retail
Black	187022	47.95
Yellow	187018	47.95



ONGUARD® BOXER SERIES DISC LOCK

M-Cylinder locking mechanism, armored hardened-steel case, Touch Lock System and special titanium plating. This lock has a high-theft resistance for high-crime areas.

- Includes three laser-cut keys; plus, one lighted key for nighttime use
- Carrying pouch with belt clip and reminder cable included
- 0.9 lbs-1.3 lbs.

Pin Size	P/N	Retail
5.5 mm	187020	41.95
8 mm	187021	43.95
10 mm	187019	43.95

KRYPTONITE®



KRYPTONITE® NEW YORK LEGEND AND NEW YORK PADLOCK

15 mm round chain links made of 3T hardened steel for ultimate strength. Durable, protective nylon cover with hook-and-loop fasteners to hold it in place. New York Padlock with 16 mm MAX-Performance steel shackle and double dead-bolt locking mechanism, protects against twist attacks. Reinforced, shrouded shell protects padlocks from cut attacks. Features highest security disc-style cylinder.

- Includes three "I" keys for better ergonomics
- \$2,000 Anti-Theft Protection offered by manufacturer
- Key Safe Program: key registration and replacement
- 5 ft. length

P/N	Retail
132080	245.95



NEW!

KRYPTONITE® KEEPER 712 INTEGRATED CHAIN

With a 48 in. (120 cm) chain length, the Kryptonite Keeper 712 is a flexible, compact and easy-to-use security deterrent.

- Features 7 mm, 4-sided chain links made from 3t manganese steel
- Patent-pending End Link Design secures chain to hardened deadbolt eliminating critical vulnerability and providing extra holding power
- High-security, disc-style cylinder is pick- and drill-resistant and resists most common hand tools
- Durable, weather-resistant nylon sleeve prevents scratches to painted finishes and protects the chain against the elements

P/N	Retail
132137	41.99



KRYPTONITE® NEW YORK CHAIN WITH EV SERIES 4 DISC LOCK

Narrower inner width of individual links prevents leverage attacks. Higher security, disc-style cylinder with more than one million key variations. Reinforced anti-drill/pull cylinder protection system. Sliding dust cover protects and extends cylinder life. 12 mm, six-sided chain made of triple heat-treated boron manganese steel for ultimate strength. Weatherproof nylon jacket allows compact coiling and protects bike surface. 14 mm hardened MAX-performance steel shackle with double-deadbolt locking mechanism. Oval crossbar design.

- Three keys included, two "I" keys and one high-intensity lighted key with replaceable battery
- Anti-theft protection and key replacement program
- 5 ft. 3 in. length

P/N	Retail
132112	163.95



KRYPTONITE® FAHGETTABOUDIT CHAIN WITH NEW YORK DISC LOCK

Narrower inner width of individual links prevents leverage attacks.

14 mm, six-sided chain made of triple heat-treated boron manganese steel for ultimate strength. Durable, protective nylon cover. 14 mm hardened MAX-performance steel shackle with double-deadbolt locking mechanism. High-security, disc-style cylinder with hardened-steel sleeve over crossbar for double security. Sliding dust cover protects and extends cylinder life.

- Three keys included, two "I" keys and one high-intensity lighted key with replaceable battery
- Anti-theft protection and key replacement program
- 5 ft. length

P/N	Retail
132033	180.95



NEW!

KRYPTONITE® KRYPTOLOK SERIES 2 912 INTEGRATED CHAIN

The Kryptolok Series 2 912 has a long-reach, chain length of 120 cm. The hardened "talon" deadbolt design is patent-pending for the Series 2 lock head. The chain secures directly to the hardened deadbolt meaning no weak link.

- 9.5 mm 4-sided chain links in high-performance 3t manganese steel
- Weather-resistant nylon sleeve
- Two stainless steel keys

P/N	Retail
132138	74.95



KRYPTONITE® NEW YORK NOOSE WITH EV SERIES 4 DISC LOCK

Cinch loop design enables effective lock up with less length of chain. 12 mm, six-sided chain made of triple heat-treated boron manganese steel for ultimate strength. Weatherproof nylon jacket allows compact coiling and protects bike surface. 14 mm hardened MAX-performance steel shackle with double-deadbolt locking mechanism. Oval crossbar design. Reinforced anti-drill/pull cylinder protection system. Sliding dust cover protects and extends cylinder life.

- Three keys included, two "I" keys and one high-intensity lighted key with replaceable battery
- Anti-theft protection and key replacement program
- 4 ft. 3 in. length

P/N	Retail
132114	138.95

AUDIO, VIDEO & NAVIGATION

INDIAN & VICTORY

WINDSHIELDS

SEATS & SISSY BARS

LUGGAGE

SECURITY & COVERS

TIRES & WHEELS

BRAKES

CHASSIS

SUSPENSION

SHEET METAL

EXHAUST

FUEL & AIR SYSTEMS

ENGINE & OIL FILTERS

PRIMARY DRIVE

TRANSMISSION & FINAL DRIVE

GASKETS & HARDWARE

HANDLEBARS & CONTROL

CABLES

FOOT CONTROL

INSTRUMENT & LIGHTING

ELECTRICAL

BATTERIES & CHARGERS

TRAILERS & RAMPS

CHEMICALS & LUBES

TOOLS & SUPPLIES

GENERAL ACCESSORIES & DISPLAY

CROSS REFERENCE

INDEX

KRYPTONITE®

KRYPTONITE® EVOLUTION SERIES 4 INTEGRATED CHAIN

Hardened 3T manganese steel chain with 10 mm, six-sided links. Integrated chains secure with Evolution™ Series 4 lock head with pinless design to secure chain to a hardened deadbolt. Enclosed in nylon-webbing sleeve to protect paint from scratches. Lifetime manufacturer's warranty against manufacturing defects.

- Free one-year \$750 anti-theft protection
- Comes with three stainless steel keys, including a lighted LED key
- Patent pending advanced hybrid cylinder design, improves function and increases security
- 5 ft. length



P/N	Retail
132122	109.95

KRYPTONITE® HARDWARE CABLE

Flexible braided steel strands for increased cut resistance. Integrated adjustable spline attachment rotates up to 300° for a greater number of possible lock carrying locations on bike frame or seat post. Weatherproof vinyl skin protects bike surface. Reinforced lock head construction with Talon lock pin retention system provides extra holding power. High-security, disc-style cylinder with anti-drill guard and more than one million key variations. Lock head rotates 360° for easier handling during lock up and removal. Dual sliding cylinder weather guards with automatic close feature.

P/N	Retail
132109	66.95



KRYPTONITE® KRYPTOFLEX 1565 KEY CABLE LOCK

Includes Transit FlexFrame-C transportation system, which allows for versatile carrying. 15 mm, flexible braided steel cable provides increased cut resistance. Lock head rotates 360° for easier handling during lock up and removal. Integrated, adjustable spline attachment rotates up to 300° for a greater number of possible lock carrying locations on frame or seat post. Dual sliding cylinder weather guards with automatic close feature.

P/N	Retail
132134	28.95



KRYPTONITE® KRYPTOFLEX 1018 KEY CABLE

Integrated adjustable spline attachment rotates up to 300° for a greater number of possible lock carrying locations on bike frame or seat post. Flexible braided steel strands for increased cut resistance. Advanced cylinder provides greater protection from picking. Lock head rotates 360° for easier handling during lock up and removal. Dual sliding cylinder weather guards with automatic close feature. Weatherproof vinyl skin protects bike surface.

Description	P/N	Retail
5/16" x 6'	132058	23.95
5/8" x 6'	132129	37.95



KRYPTONITE® KRYPTOLOK SERIES 2 INTEGRATED CHAIN

Hardened 3T manganese steel chain with 9 mm, four-sided links. Integrated chains secure with KryptoLok® Series 2 lock head with pinless design to secure chain to a hardened deadbolt. Enclosed in nylon webbing sleeve to protect paint from scratches.

- Free one-year \$500 anti-theft protection.
- Comes with two ergonomic "I" keys including a lighted LED key
- Lifetime manufacturer's warranty against manufacturing defects
- Patent pending advanced hybrid cylinder design, improves function and increases security
- 5 ft. length



P/N	Retail
132124	88.95

KRYPTONITE® NEW YORK LOCK LS/MC

16 mm hardened MAX-performance steel shackle resists bolt cutters and leverage attacks. Higher-security, disc-style cylinder with double deadbolt locking for extensive holding power. Sliding dust cover protects cylinder. Center keyway defends against leverage attacks. Protective vinyl coating.

- Three keys included, two "I" keys and one high-intensity lighted key with replaceable battery
- Anti-theft protection and key replacement program

P/N	Retail
132049	106.95



KRYPTONITE® KRYPTOFLEX 815 KEY CABLE

Includes Transit FlexFrame-C transportation system, which allows for versatile carrying. 8 mm, flexible braided steel cable provides increased cut resistance. Advanced cylinder provides greater protection from picking. Lock head rotates 360° for easier handling during lock up and removal. Integrated, adjustable spline attachment rotates up to 300° for a greater number of possible lock carrying locations on frame or seat post. Dual sliding cylinder weather guards with automatic close feature. Two easy-to-use reversible keys.

P/N	Retail
132131	15.45



NEW!

KRYPTONITE® KRYPTOFLEX 1230 KEY CABLE

Extra long 10 ft. cable for use in locations where longer lengths are needed for gear or powersport lock up.

P/N	Retail
132139	33.95



KRYPTONITE®

 AUDIO, VIDEO
& NAVIGATION

 INDIAN
& VICTORY

WINDSHIELDS

 SEATS &
SISSY BARS

LUGGAGE

**SECURITY
& COVERS**

 TIRES &
WHEELS

BRAKES

CHASSIS

SUSPENSION

SHEET METAL

EXHAUST

 FUEL & AIR
SYSTEMS

 ENGINE &
OIL FILTERS

PRIMARY DRIVE

 TRANSMISSION
& FINAL DRIVE

 GASKETS &
HARDWARE

 HANDLEBARS
& CONTROL

CABLES

 FOOT
CONTROL

 INSTRUMENT
& LIGHTING

ELECTRICAL

 BATTERIES &
CHARGERS

 TRAILERS
& RAMPS

 CHEMICALS
& LUBES

 TOOLS &
SUPPLIES

 GENERAL
ACCESSORIES
& DISPLAY

 CROSS
REFERENCE

INDEX

KRYPTONITE® KRYPTOFLEX 1018 COMBO CABLE

Flexible braided steel strands for increased cut resistance. Integrated, four-digit resettable combination lock with indexed number dial. Lock head rotates 360° for easier handling during lock up and removal. Dual sliding cylinder weather guards with automatic close feature. Weatherproof vinyl skin protects bike surface.

- 10 mm x 6 ft.

P/N	Retail
132115	23.95



KRYPTONITE® KRYPTOFLEX 1007 LOOPED CABLE

10 mm x 7 ft. flexible braided cable. Straight cable with closed loops at each end. Easy-to-use with Kryptonite locks.

P/N	Retail
132029	12.95



KRYPTONITE® NEW YORK DISC LOCK

14 mm hardened MAX-performance steel shackle. Protective vinyl coating. Double-deadbolt design gives additional protection against twist attacks. Patent pending advanced hybrid cylinder design improves function and increases security. Sliding dust cover protects cylinder. Includes three keys:

- two "I" keys and one with a high-intensity LED bulb for convenient, easy unlocking in the dark.
- Includes carrying pouch and disc lock reminder
- 2.2" x 2.3"
- \$750 anti-theft protection, offered by manufacturer

P/N	Retail
132068	79.95



KRYPTONITE® KRYPTOLOK SERIES 2 DISC LOCK

13 mm hardened performance steel shackle. High-security, disc-style cylinder. Reinforced crossbar design gives additional protection for the lock internals. Rotating dust cover protects cylinder. Includes two "I" keys that are more ergonomic and reduce the amount of torque to keep them from bending or breaking.

- 1.7" x 1.9"
- \$500 anti-theft protection, offered by manufacturer

P/N	Retail
132120	38.95

KRYPTONITE® KRYPTOFLEX 818 CABLE WITH KEY PADLOCK

8 mm double deadbolt padlock with hardened-steel shackle. Cable and lock are coated with black vinyl.

- 5/16 in. x 6 ft. self-coiling cable

P/N	Retail
132013	14.95



132072

KRYPTONITE® KRYPTOFLEX LOOPED CABLE

Easy-to-use with Kryptonite locks. 10 mm flexible braided cable. Straight cable with closed loops at each end.

Description	P/N	Retail
30' x 10 mm, Kryptoflex 3010 Looped Cable	132072	35.95
4 ft. Looped cable	132132	9.95



KRYPTONITE® EVOLUTION™ SERIES 4 DISC LOCK

Double-deadbolt design gives additional protection against twist attacks. 14 mm hardened MAX-Performance steel shackle. Includes three keys: two "I" keys and one with a high-intensity LED bulb for convenient, easy unlocking in the dark. Patent-pending, reinforced oval crossbar design is stronger than a typical round tube. Patent-pending, advanced hybrid cylinder design, improves function and increases security.

- Available in multiple colors
- 1.8" x 2.1"
- \$750 anti-theft protection, offered by manufacturer

Color	P/N	Retail
Orange Premium Pack	132111	62.95
Black	132116	58.95
Red	132117	58.95
Yellow	132118	58.95

KRYPTONITE®



KRYPTONITE® KRYPTOLOK DFS 10 DISC LOCK

Stapler-style disc lock with 10 mm pin diameter for increased theft protection. Hardened, drop-forged steel resists cutting, sawing, freezing and chisel attacks.

- Dual-reinforced, high-security, disc-style cylinder
- Available in multiple finishes
- Includes pouch with belt clip for easier transport
- 10 mm x 3 in.

Color	P/N	Retail
Chrome	132062	48.95
Yellow	132063	48.95
Orange	132102	48.95



KRYPTONITE® STAINLESS STEEL ROUND PADLOCK

Deadbolt locking. 70 mm armor protected shackle. Stainless steel, deep-welded body for all-weather performance. Five-pin brass cylinder.

- 2-3/4 in. diameter

P/N	Retail
132073	21.95



KRYPTONITE® STRONGHOLD ANCHOR

16 mm hardened carbon alloy steel shackle. Steel shackle lays flat within domed body when not in use; safe to drive or walk over. 5/8 in. cement anchor bolts install directly into cement. Extra secure locking point for use indoors and out providing a convenient place for locking valuable equipment.

- Includes masonry bits

P/N	Retail
132079	97.95



KRYPTONITE® KEEPER 5-S2 DISC LOCK

Stapler-style disc lock immobilizes vehicle to prevent rollaway or ride-away theft. Dual-reinforced, high-security, disc-style cylinder. 5 mm pin diameter fits smaller brake disc holes. Includes bright orange reminder cable to prevent riding away while disc lock is engaged. Compact, lightweight and weatherproof. Includes two stainless steel "I" keys that are more ergonomic and reduce the amount of torque to keep them from bending or breaking.

- Maximum distance for disc rotor insertion: 1.63 in. (41.6 mm)
- 6 mm maximum disc rotor thickness to insert lock
- 5.5 mm disc locking pin thickness

Description	P/N	Retail
Matte Yellow, 2 Disc Lock	132126	32.95
Black Chrome, 2 Disc Lock	132125	32.95

NEW!

KRYPTONITE® R2 RETRACTOR POCKET CABLE LOCK

Extremely flexible, 90 cm retractable cable lock that's perfect for your pocket.

- 90 cm long
- 2.4 mm vinyl-coated, twisted-steel cable for lightweight security
- Retracts into housing for easy storage

P/N	Retail
132002	16.99



KRYPTONITE® DISC LOCK SECURITY REMINDER

Flexible, tightly coiled cable reminder to prevent riding away while the disc lock is engaged. Designed for use with all Kryptonite disc locks. Bright orange cable loops from your disc lock to your handlebar.

- 4.3 ft.

P/N	Retail
132093	7.95



Security Tech Germany

ABUS GRANIT EXTREME PLUS 59 CHAIN LOCK

12 mm strong chain with fabric sleeve to prevent damage to the motorcycle's paint. ABUS Power Link Technology offers a direct and covered locking of the chain into the locking mechanism. The chain, the case, as well as supporting elements of the locking mechanism, are made of special hardened steel. ABUS X-Plus cylinder for highest protection against picking. Manually operated keyhole cover protects against dirt and corrosion.

- Two keys are included, one with LED light

Description	P/N	Retail
12 mm x 140 cm (55")	101020	279.99



ABUS GRANIT CITY X-PLUS 1060 CHAIN LOCK

10 mm hexagonal chain, hard-as-granite, with very high-resistance against cutting, pulling and torsion. Patented ABUS Power Cell technology with direct locking of the chain into the lock body. Interlocked lock house to protect against brutal attacks. ABUS X-Plus cylinder for highest protection against picking. Automatic keyhole cover protects against dirt and corrosion.

- Two keys are included, one with LED light

Description	P/N	Retail
10 mm x 140 cm (55")	101021	209.99
10 mm x 170 cm (66")	101022	229.99



ABUS GRANIT 58 12KS120 CHAIN LOCK

Granit Power U-Shackle lock with 16 mm shackle; plus, hardened 12 mm chain for super security. Chain with loop effect for handy locking using the overall chain length. ABUS X-Plus locking system for extremely high-protection against intelligent opening methods.

- Two keys are included, one with LED light

Description	P/N	Retail
12 mm x 120 cm (47")	101024	229.99



ABUS GRANIT VICTORY X-PLUS 68 + KS CHAIN LOCK

Two-in-one, universally usable security system; brake disc lock can also be used individually. Granit Victory X-Plus 68 brake disc lock made of special steel with hardened 12 mm chain. ABUS X-Plus locking system for highest protection against intelligent opening methods.

- Includes memory cable and two keys, one with LED light

Description	P/N	Retail
12 mm x 120 cm (47")	101025	179.99



ABUS GRANIT DETECTO ELECTRONIC CHAIN LOCK/BRAKE DISC LOCK

Hardened steel 12 mm loop chain. Lock can also be used without chain. ABUS X-Plus cylinder for highest protection against picking. 3-D position control for immediate alarm when position changes or shocks are detected. High-quality steel lock body. Special locking system for extremely high protection against opening methods.

- Includes two AAA standard batteries
- Two keys are included, one LED lighted
- 12 mm x 120 cm (47 in.)

P/N	Retail
101069	249.99



ABUS 12KS120 CHAIN FOR GRANIT DETECTO X-PLUS 8077

Chain for use with Granit Detecto X-Plus 8077 alarm disc lock (P/N 101067 or 101084). 12 mm strong loop chain with fabric sleeve. Made from special hardened steel.

- 120 cm (47 in.) long

P/N	Retail
101064	129.99



ABUS CITY CHAIN 1010 CHAIN LOCK

9 mm hexagonal hardened-steel chain with fabric sleeve to prevent damage to the motorcycle's paint work. ABUS-Plus cylinder for high-picking protection. Automatic keyhole cover protects against dirt and corrosion.

- Two keys are supplied with the lock

Description	P/N	Retail
9 mm x 170 cm (66")	101027	169.99



ABUS STEEL-O-CHAIN 880 CHAIN LOCK

Black robust textile sleeve protects the paint from scratches.

- Hardened 7 mm square chain
- ABUS-quality locking cylinder with automatic locking
- Two keys are supplied with the lock

Description	P/N	Retail
7 mm x 110 cm (43")	101032	54.99



AUDIO, VIDEO & NAVIGATION

INDIAN & VICTORY

WINDSHIELDS

SEATS & SISSY BARS

LUGGAGE

SECURITY & COVERS

TIRES & WHEELS

BRAKES

CHASSIS

SUSPENSION

SHEET METAL

EXHAUST

FUEL & AIR SYSTEMS

ENGINE & OIL FILTERS

PRIMARY DRIVE

TRANSMISSION & FINAL DRIVE

GASKETS & HARDWARE

HANDLEBARS & CONTROL

CABLES

FOOT CONTROL

INSTRUMENT & LIGHTING

ELECTRICAL

BATTERIES & CHARGERS

TRAILERS & RAMPS

CHEMICALS & LUBES

TOOLS & SUPPLIES

GENERAL ACCESSORIES & DISPLAY

CROSS REFERENCE

INDEX

SECURITY & COVERS



Security Tech Germany

ABUS STEEL-O-CHAIN IVEN 8210 CHAIN LOCK

8 mm strong square chain, with functional, long-life and highly-flexible mesh sleeve to prevent damage to the paint. Chain and case, as well as supporting elements of the locking mechanism, are made of special hardened-steel. Ergonomic lock body cover with SCT Soft Case Technology, which offers a very high-impact resistance. Premium cylinder for high-protection against picking.

- Two keys are supplied with the lock

Description	P/N	Retail
8 mm x 110 cm (43")	101030	89.99



ABUS STEEL-O-CHAIN IVY 9100 CHAIN LOCK

10 mm strong square chain, with functional, long-life and highly-flexible mesh sleeve to prevent damage to the paint. Chain and case, as well as supporting elements of the locking mechanism, are made of special hardened-steel. Ergonomically-shaped lock body and user-friendly reversible key. Premium cylinder for high-protection against picking.

- Two keys are supplied with the lock

Description	P/N	Retail
10 mm x 140 cm (55")	101028	129.99



ABUS GRANIT POWER XS67 10KS120 CHAIN LOCK

Granit Power XS67 U-Shackle lock with 14 mm shackle; plus, hardened 10 mm chain for super security. Chain with loop effect for handy locking using the overall chain length. ABUS X-Plus locking system for highest protection against picking.

- Two keys are included, one LED lighted

Description	P/N	Retail
10 mm x 120 cm (47")	101060	179.99



ABUS GRANIT DETECTO X-PLUS 8077 ALARM DISC LOCK

Electronic brake disc lock with a 13 mm special hardened bolt. Bolt, lock body and supporting elements of the locking mechanism are made of special hardened steel. Alarm function on basis of the ABUS 3D detection system, which means that every movement is detected. Lock can be transported in locked condition without activated detection system, thanks to automatic brake disc recognition system. A multicolored LED and different acoustic signals inform about battery, activation and alarm status. ABUS X-Plus cylinder for highest protection against picking. Manual keyhole cover protects against dirt and corrosion.

- Alarm of at least 100-decibels
- Two keys are included, one LED lighted
- Includes two AAA standard batteries

Color	P/N	Retail
Yellow	101067	179.99
Orange	101084	179.99
Green	101089	179.99
Red	101090	179.99

ABUS THE BROOKLYN CHAIN

80/T150 TITANIUM™ Padlock features a solid lock body made from TITANIUM aluminum alloy: offering higher security for less weight. Open 10 mm/120 cm (47 in.) hardened-steel loop chain. Fabric sleeve protects frame and paint job from damage. Hardened-steel shackle with NANO PROTECT™ coating. High-precision, 6-pin key cylinder.

- Two keys are supplied with the lock

Description	P/N	Retail
10 mm x 120 cm (47")	101066	99.99



ABUS GRANIT POWER XS67

14 mm steel shackle. Double-bolted shackle in lock body. Bolt, lock body and supporting elements are made from hardened-steel. Smooth silicone lock body cover prevents scratches. ABUS X-Plus locking system for highest protection against picking.

- Two keys are included, one LED lighted
- Manually operated keyhole cover protects against dirt and corrosion
- Includes "roll up" memory cable

Description	P/N	Retail
Red	101062	99.99
Yellow	101063	99.99



ABUS EXPEDITION CHAIN LOCK

6 mm square chain with fabric sleeve to protect paint from scratches. Specially hardened. Lock and cylinder protected against corrosion. ABUS-quality lock cylinder.

- Two keys are supplied with the lock

Description	P/N	Retail
6 mm x 110 cm (43")	101033	39.99





ABUS DETECTO 7000 RS1 ALARM DISC LOCK

A multicolored LED and different acoustic signals update battery, activation and alarm status. One hand operation due to the patented Snap n' Go system; lock closes and activates automatically when pressed into brake disc. ABUS Extra Class cylinder with encoded reversible key. Bolt, lock body and supporting elements of the locking mechanism are made of special hardened-steel. Alarm function on basis of the ABUS 3D detection system, which means that every movement is detected. Lock can be transported in locked condition without activated detection system, thanks to the manual activation button, integrated into the Snap n' Go mechanism.

- 3 mm x 5 mm square steel bolt.
- Alarm of at least 100-decibels
- Two keys are included, one LED lighted
- Includes two AAA standard batteries

Description	P/N	Retail
Flame Black	101082	139.99
Sonic Red	101083	139.99



ABUS GRANIT SLEDG 77 WEB DISC LOCK

The sliding-mechanism permits compact measurements along with flexible and easy mounting. Soft plastic cover for better handling and to prevent scratches to paint. The bolt, lock body, as well as supporting elements of the locking mechanism, are made of special hardened-steel. ABUS X-Plus cylinder for highest protection against picking.

- 13 mm closing bolt
- Two keys are included, one LED lighted
- Includes memory cable

P/N	Retail
101042	129.99



ABUS TRIGGER ALARM DISC LOCK

Hardened-steel locking bolt: 5 mm for the Trigger Alarm 345 and 9.5 mm for the Trigger Alarm 350. Easy handling due to push down cylinder where the bolt is moved in the locking process automatically. Bolt, lock body, as well as supporting elements of the locking mechanism, are made of special hardened steel. Alarm function on basis of a vibration detection system, which means that every impact attack is detected. Lock can be transported in locked condition without activating detection system thanks to an on/off key position. Different acoustic signals inform about battery, activation and alarm status. Premium cylinder for high protection against manipulations picking.

- Two keys are supplied with the lock
- Battery for alarm function is included
- Includes memory cable

Type	Bolt	P/N	Retail
345	5mm	101041	69.99
350	9.5mm	101040	74.99

ABUS DETECTO RS 3 ALARM DISC LOCK

Different acoustic signals update you on battery life, the activation button and alarm status. One hand operation due to the patented Snap n' Go system; lock closes and activates automatically when pressed onto brake disc. ABUS extra-class cylinder with encoded reversible key. Bolt, lock body and supporting elements of the locking mechanism are made of special hardened-steel. Alarm functions on basis of vibration detection system, which means that every impact attack is detected. Lock can be transported in locked condition without activating detection system, thanks to the manual activation button, integrated into the Snap n' Go mechanism.

- 3 mm x 5 mm square steel bolt
- Alarm of at least 100-decibels
- Two keys are supplied with the lock
- Includes 2 AAA standard batteries
- Includes memory cable

P/N	Retail
101039	109.99



ABUS GRANIT VICTORY X-PLUS 68 ROLL UP DISC LOCK

Bolt, lock body, as well as supporting elements of the locking mechanism, are made of special hardened-steel. Round shape and turnable outer ring handicap the use of opening tools. ABUS X-Plus cylinder for highest protection against picking.

- 14 mm steel bolt
- Integrated memory cable
- Two keys are included, one LED lighted

P/N	Retail
101043	119.99



ABUS TRIGGER ALPHA DISC LOCK

Hardened-steel locking bolt: 5 mm for the Trigger Alpha 335 and 9.5 mm for the Trigger Alpha 340. Easy handling due to push down cylinder where the bolt is moved in the locking process automatically. Diagonally implemented cylinder for maximum space for turning key. Bolt, lock body, as well as supporting elements of the locking mechanism, are made of special hardened-steel. Quality cylinder for high-protection.

- Two keys are supplied with the lock
- Includes memory cable

P/N	Retail
101046	49.99



ABUS ELEMENT DISC LOCK

Hardened-steel locking bolt: 5 mm for the Element 285 and 9.5 mm for the Element 290. Easy handling due to push down cylinder where the bolt is moved in the locking process automatically. Bolt is made of special hardened-steel. Quality cylinder.

- Two keys are supplied with the lock
- Includes memory cable

Type	Bolt	P/N	Retail
285	5mm	101048	29.99
290	9.5mm	101047	34.99



AUDIO, VIDEO & NAVIGATION

INDIAN & VICTORY

WINDSHIELDS

SEATS & SISSY BARS

LUGGAGE

SECURITY & COVERS

TIRES & WHEELS

BRAKES

CHASSIS

SUSPENSION

SHEET METAL

EXHAUST

FUEL & AIR SYSTEMS

ENGINE & OIL FILTERS

PRIMARY DRIVE

TRANSMISSION & FINAL DRIVE

GASKETS & HARDWARE

HANDLEBARS & CONTROL

CABLES

FOOT CONTROL

INSTRUMENT & LIGHTING

ELECTRICAL

BATTERIES & CHARGERS

TRAILERS & RAMPS

CHEMICALS & LUBES

TOOLS & SUPPLIES

GENERAL ACCESSORIES & DISPLAY

CROSS REFERENCE

INDEX

SECURITY & COVERS



Security Tech Germany



101049



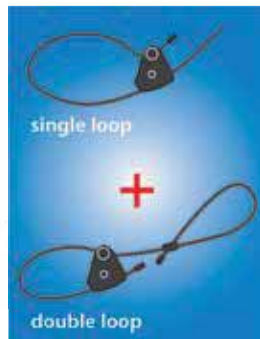
101051

ABUS PROVOQUE DISC LOCK

Hardened-steel locking bolt: 10 mm for the Provoque 300 and 5 mm for the Provoque 305. Easy one-hand push button cylinder. Quality lock cylinder with rubberized surface.

- Two keys are supplied with the lock

Type	Bolt	P/N	Retail
300	10mm	101049	44.99
305	5mm	101051	39.99



ABUS MULTILOOP 210

Integrated adaptor in the body for a conversion from one loop to a double-loop cable. 10 mm strong premium steel cable. PVC-coating to prevent damage to the paint. Semi-transparent silicone coating on the lock body. Quality lock cylinder.

- Two keys are supplied with the lock
- Cable length: 185 cm (72 in.)

P/N	Retail
101055	49.99

ABUS COMBIFLEX 201

Automatic retracting cable. Individually settable code. Casing in attractive mobile phone format.

- Cable length: 27 in.

P/N	Retail
101071	24.99



ABUS WBA 100 GRANIT WALL/FLOOR ANCHOR

Due to its flat shape and the use of high-quality plastic, it is possible to drive over the anchor in fixed position. 16 mm shackle made of hardened special steel for extreme resistance against the most aggressive attacks.

- Includes hardware

P/N	Retail
101053	129.99



ABUS COMBILOOP 205

PVC-coating to prevent damage to paint. Semi-transparent silicone coating on the lock body with "soft touch" properties for better grip. Automatic locking at insertion of the locking bolt. Individually settable code.

- 5 mm strong steel cable
- Cable length: 200 cm (78 in.)

P/N	Retail
101056	29.99



ABUS COMBIFLEX PRO 202

Automatic retracting cable. Individually settable code. Casing in attractive mobile phone format.

- Cable length: 90 cm (35 in.)

P/N	Retail
101057	29.99



ABUS BORDO GRANIT X-PLUS 6500

ABUS Link-Protection-Shield offers high-saw protection of the links. 5.5 mm steel bars with extra-soft, two-component coating to prevent damage to paint. Color-matching silicone cover for the lock body with soft touch properties. Link construction offers compact folding. Bars, links and case, as well as supporting elements of the locking system, are made of special hardened steel. ABUS X-Plus cylinder for extremely high-protection against picking.

- Two keys supplied with the lock, one with LED light
- 85 cm (33 in.) long

P/N	Retail
101058	179.99



ABUS BORDO BIG 6000

Link construction allows compact folding. 5 mm steel bars with extra-soft, two-component coating to prevent damage to paint. Color-matching silicone cover for the lock body with soft touch properties. Bars, case and the links, as well as supporting elements of the locking system, are made of special hardened steel. Bars are linked with special rivets.

- Two keys are supplied with the lock
- 120 cm (47 in.) long

P/N	Retail
101059	149.99

AUDIO, VIDEO
& NAVIGATION

INDIAN
& VICTORY

WINDSHIELDS

SEATS &
SISSY BARS

LUGGAGE

SECURITY
& COVERS

TIRES &
WHEELS

BRAKES

CHASSIS

SUSPENSION

SHEET METAL

EXHAUST

FUEL & AIR
SYSTEMS

ENGINE &
OIL FILTERS

PRIMARY DRIVE

TRANSMISSION
& FINAL DRIVE

GASKETS &
HARDWARE

HANDLEBARS
& CONTROL

CABLES

FOOT
CONTROL

INSTRUMENT
& LIGHTING

ELECTRICAL

BATTERIES &
CHARGERS

TRAILERS
& RAMPS

CHEMICALS
& LUBES

TOOLS &
SUPPLIES

GENERAL
ACCESSORIES
& DISPLAY

CROSS
REFERENCE

INDEX

KURYAKYN



KURYAKYN® UNIVERSAL HELMET LOCK

- Works on engine guards, frame tubes or any 7/8 to 1-1/2 in. tubes
- Chrome
 - Installs with standard tools
 - Works best mounted on a 2-1/4 in. long section of straight tube

Size	Mfg/N	P/N	Retail
7/8" - 1-1/4" Tubes	4220	497380	26.99
1-1/4" - 1-1/2" Tubes	4232	497324	26.99

BIKER'S CHOICE



BIKER'S CHOICE® HELMET LOCK

- Universal mount lock.
- Fits 7/8 to 1-1/4 in. tubing
 - Tamper-proof, one-way screws included

Color	P/N	Retail
Chrome	492970	26.50
Black	492979	23.95



NEW!

HELMETLOK™ GEN II COMBINATION LOCK WITH T-BAR

- Protective rubberized coating to prevent scratching. Carabiner-style. Outward opening mechanism. Designed to secure helmet, jacket or bag.
- Comes with T-bar for helmets
 - One-year limited manufacturer's warranty

P/N	Retail
132183	25.95

BULLY LOCKS



NEW! EXCLUSIVE

BULLY LOCKS™ HELMET LOCK EXTENDER

This handy item makes it easier to use your bike's built in helmet lock by extending the length of your helmet's D-ring strap.

- 1-1/2 in. wide for large D-rings
- Comes with carabiner hook to take it everywhere you go

Color	P/N	Retail
Black	132259	6.95
Gold	132260	6.95
Silver	132261	6.95



MOTION PRO® HELMET LOCK

- Clamps securely to any 7/8 in. round tube bar with one-way mounting
- Black

P/N	Retail
061006	23.99

Lockstraps

Locking tie-downs



LOCKSTRAPS 2" HELMET/JACKET LOCK

Now you don't have to carry around your heavy street bike jacket or leave your helmet on the seat. You can lock all of them together and then lock them to your bike.

- Great for carrying in your pack to lock up your dirt bike, bicycle, etc.
- Locking carabiner so there are no keys to worry about
- Full-length, steel, braided cable to prevent theft by the casual criminal
- Sold individually

P/N	Retail
100658	24.95



HELMETLOK™ GEN II CABLE

A 3 mm thick cable with PVC protective coating to prevent scratching.

- 70 in. expanded length

P/N	Retail
132178	7.95

AUDIO, VIDEO & NAVIGATION

INDIAN & VICTORY

WINDSHIELDS

SEATS & SISSY BARS

LUGGAGE

SECURITY & COVERS

TIRES & WHEELS

BRAKES

CHASSIS

SUSPENSION

SHEET METAL

EXHAUST

FUEL & AIR SYSTEMS

ENGINE & OIL FILTERS

PRIMARY DRIVE

TRANSMISSION & FINAL DRIVE

GASKETS & HARDWARE

HANDLEBARS & CONTROL

CABLES

FOOT CONTROL

INSTRUMENT & LIGHTING

ELECTRICAL

BATTERIES & CHARGERS

TRAILERS & RAMPS

CHEMICALS & LUBES

TOOLS & SUPPLIES

GENERAL ACCESSORIES & DISPLAY

CROSS REFERENCE

INDEX

SECURITY & COVERS



SPEED-WAY™ SHELTERS

Waterproof and UV protective fabric. Fast and convenient. No motorcycle contact. Full coverage to the ground. Locking feature. Speed-Way shelters and motorcycle covers fit virtually all motorcycles as well as scooters and many ATVs. Fast assembly in less than 30 minutes. Simply pull your cycle into a Speed-Way motorcycle shelter, lower the retractable cover over the bike and you are done; with our motorcycle covers there is no wait time for pipes to cool down. Powder-coated steel tube structure for rust protection and protection from falling objects. Built-in locking hardware allows the Speed-Way motorcycle cover to be locked in the lowered position. Easy-to-use: simple hand-lift retractable function for covering and uncovering your bike. Anchor plates and cement anchors included for secure mounting and support.

100% Waterproof Material

Durable polyester fabric with 700 mm polyurethane coating and fully taped seams for waterproofing. Roof top curved poles allow for fast and complete water run-off as well as additional interior space. Side tie-down attachments sewn into each side of the fabric cover for added support in the event of high wind. Built-in splash guard sewn around the bottom perimeter of shelters to seal out rain, dust and debris while allowing proper ventilation.

Full Ventilation and Closure

Two large side windows offering full-ventilation and full-closure window covers.

Carry Bag

Includes a custom Speed-Way Carry Bag for storage

LED Bright Light

Includes a 48 lamp LED Bright Light with three operating functions. Helpful for night parking or general night access. Note: Stakes add stability. Stakes not included.



Description	P/N	Retail
Standard/Sport Shelter	603700	345.95
Touring Shelter	603701	445.95

Accessories

Floors prevent water and dampness from occurring, which causes excessive moisture and condensation build-up, leading to unwanted corrosion to your bike.

Description	P/N	Retail
Standard/Sport Floor	603702	84.95
Touring Floor	603703	99.95
Grey, Replacement Cover, Standard/Sport	603707*	179.95
Grey, Replacement Cover, Touring	603708	236.95

* Special Order



43"

64"



108"

Sport/Standard size with Carry Bag: 55 lbs.



54"

76"



136"

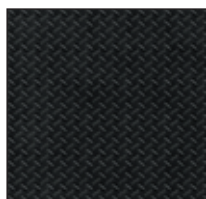
Touring Size with Carry Bag: 72 lbs.

Works Great
with Wheel
Chocks

ON PAGE
1792

Speed-Way Fitment Chart

Models	Standard	Touring
Harley-Davidson® Sportster/Dyna/Softail/V-Rod FLHR/FLHT/FLTR	•	•
Victory V92C Cruiser, Deluxe, Sport		•
Buell Blast, Cyclone M2, Lightning X1, S3W/BAGS, Thunderbolt S3/S3T	•	



Optional Diamond Tough Floor, sold separately.



48 LED Brite Light included with each shelter.



Locking Hardware



Full Ventilation and Closure



Carry Bag



EXCLUSIVE

COVERMAX® DELUXE MOTORCYCLE COVERS

Deluxe, heavyweight, all-weather cover. Top made from water-resistant, 420-denier 100% polyester, with PU coating. Bottom made from 65% polyester/35% cotton mix with heat-resistant and PU-coating. Waterproof heat-sealed seams. Plastic topped vent remains open at all times for improved ventilation. Sewn-in soft windshield liner. Large grommets for attachment of anti-theft devices. Elasticized bottom and adjustable hold down strap for a snug fit.

- Includes storage bag
- Two-year manufacturer's warranty

Note: Wait for bike to cool before applying cover.



Description	P/N	Retail
M, Fits Sport/Custom 500-1400cc With Small Fairings	107500	69.95
L, Full Dress 500-1100cc With Fairings and Bags	107501	74.95
XL, Fits Touring/Full Dress 1500cc and Larger w/Fairings & Bags	107502	79.95
2XL, Fits Full Dress 1800cc and Larger With Fairings and Bags	107503	84.95



EXCLUSIVE

COVERMAX® STANDARD MOTORCYCLE COVERS

Lightweight, all-weather, water-resistant cover. Air vents with velcro closures. Reinforced grommets sewn into cover. Elasticized bottom for snug fit.

- Includes storage pouch
- Two-year manufacturer's warranty

Note: Wait for bike to cool before applying cover.



Description	P/N	Retail
L, Fits Sportbikes	107511	34.95
XL, Fits Touring Bikes	107512	39.95



EXCLUSIVE

COVERMAX® MOTORCYCLE HALF COVERS

Lightweight, all-weather, water-resistant cover. Air vents with velcro closures. Reinforced grommets sewn into cover. Elasticized bottom for snug fit.

- Includes storage pouch
- Two-year manufacturer's warranty

Note: Wait for bike to cool before applying cover.



Description	P/N	Retail
M, Fits Sportbikes	107521	29.95
L, Fits Touring Bikes	107522	32.95
XL, Fits Touring Bikes	107523	34.95



EXCLUSIVE

COVERMAX® ROADSTER COVERS

Heavy-duty, top of the line, all-weather cover that is designed specifically for trikes. Waterproof seams, 300-denier polyester with PU coating. Ultra-soft 30G velour lining helps protect paint from scratches. Two top covered vents improve ventilation and help reduce condensation build up. Vent covers are reflective for added visibility and security. Convenient access panel without removal of cover. Windshield liner helps protect windshield from scratching. Extra-wide tail slot accommodates multiple radio antennas. Tailor-fit elastic skirt and adjustable hook-and-loop center strap helps secure the cover and gives a custom style fit. Built-in grommets for use of security cable lock (cable lock not included). Available for metric trikes and/or Spyder roadster.

- Two-year manufacturer's warranty

Note: Wait for bike to cool before applying cover.



Description	P/N	Retail
Fits Harley-Davidson®	107551	114.95
Fits Honda® Goldwing®	107552	119.95
Fits Can-Am® Spyder	107553	119.95



COVERMAX® MOTORCYCLE FITMENT GUIDE

Application	Deluxe	Standard	Half Cover	Application	Deluxe	Standard	Half Cover
FLHR Electra Glide	X-Large	X-Large	X-Large	FXDS Dyna Convertible	Large	Large	X-Large
FLHR Road King/Classic	X-Large	X-Large	X-Large	FXDWG Dyna Wide Glide	Large	Large	X-Large
FLHRS Road King Custom	X-Large	X-Large	X-Large	FXLR w/windshield	Large	Large	X-Large
FLHS Electra Glide Sport	X-Large	X-Large	X-Large	FXR Low Rider/FXR Super Glide	Medium	Medium	Large
FLHT Electra Glide Standard	X-Large	X-Large	X-Large	FXRT Sport Glide	Large	Large	X-Large
FLHT-C Electra Glide/Classic	X-Large	X-Large	X-Large	FXST Softail	Large	Large	X-Large
FLHT-C Ultra Classic Electra Glide	X-Large	X-Large	X-Large	FXSTB Night Train	Large	Large	X-Large
FLSTC Heritage Softail Classic	X-Large	X-Large	X-Large	FXSTD Softail Deuce	Large	Large	X-Large
FLSTF Fat Boy	Large	Large	X-Large	FXSTS Springer Softail	Large	Large	X-Large
FLSTS Heritage Springer	Large	Large	X-Large	FXSTSB Bad Boy	Large	Large	X-Large
FLTC Ultra Classic Tour Glide	X-Large	X-Large	X-Large	FXSTSI Softail	Large	Large	X-Large
FLTR Road Glide	X-Large	X-Large	X-Large	Softail Deluxe	Large	Large	X-Large
Dyna Super Glide T Sport	Large	Large	X-Large	Softail Springer CI	Large	Large	X-Large
FXD Dyna Super Glide	Medium	Medium	Large	Sportsters	Medium	Medium	Large
FXD w/windshield	Large	Large	X-Large	V-Rod	Large	Large	X-Large



JACK DANIEL'S® OLD NO. 7 BIKE COVERS

This Jack Daniel's bike cover is made from UV-treated Tri-Max polyester. Features electronically sealed seams, which make the cover 100% waterproof. Heat-resistant lower panels help prevent melting of the cover. Built-in soft windshield liner protects your windshield from damage. Perma-Venting system minimizes condensation. Elastic bottom with 1 in. grommets keep the cover in place. Covers come with a Jack Daniel's stuff sac.

- The 2XL size includes a free optional antenna grommet kit



Description	P/N	Retail
XL, Fits Most Cruisers	077219	89.99
2XL, Fits Most Models w/Tour-Pak	077220	99.99



DOWCO® GUARDIAN WEATHERALL PLUS MOTORCYCLE COVERS

Top-of-the-line and most popular cover from Dowco. Made with ClimaShield® Plus, a heavy-duty, waterproof, breathable, 300-denier, solution-dyed polyester fabric with a durable, water-repellent top coat and polyurethane and mildew-resistant undercoating; this material provides maximum protection against rain, mildew and fading caused by the sun's UV rays. All seams are taped to ensure maximum waterproofing. Soft cotton is used to protect the windshield. Cover can be placed on the bike while hot, as heat shield material is used in places that may come in contact with hot pipes. Reflective Moisture Guard® vent system prevents moisture build-up under the cover. Elastic shock cord is sewn into the bottom of the cover to provide a snug fit. Polyester webbing belly strap is sewn-in to prevent the cover from coming off in high winds. Sewn-in hole for wheel lock to be passed through, for added security. Sewn-in alarm pockets allow for the use of the Dowco Guardian Cover Alarm (sold separately).

- Includes convenient drawstring back for easy transporting
- Limited lifetime manufacturer's warranty



Description	P/N	Retail
Black, 2XL, Fits Touring/Full Dress 1500cc and Up	106500	118.99
Black, XL, Fits Touring/Full Dress Large Bikes Up to 1400cc	106400	108.99
Black, L, Fits Bikes w/Fairing and Bags Sport/Custom	105100	98.99
Black, M, Fits Sport/Custom - 500-1400cc	105200	88.99
Bikes w/Small Fairing		
Fits Sportbikes	105205	108.99
For Use With Trike Cover	107147	111.99
Black, 2XL	107146	149.99
Fits Cruisers	106530	98.99
Fits Adventure Touring Bike	105150	111.99
Fits Spyder	107168	111.99
Black, 3XL	106525	128.99



DOWCO® GUARDIAN® MOTORCYCLE COVER ALARM

Features pin-pull, that when disengaged, emits a 130-decibel warning. Installs in minutes and requires no special wiring. For use with all Guardian WeatherAll Plus covers with alarm compartments.

P/N	Retail
104975	24.99



AUDIO, VIDEO & NAVIGATION

INDIAN & VICTORY

WINDSHIELDS

SEATS & SISSY BARS

LUGGAGE

SECURITY & COVERS

TIRES & WHEELS

BRAKES

CHASSIS

SUSPENSION

SHEET METAL

EXHAUST

FUEL & AIR SYSTEMS

ENGINE & OIL FILTERS

PRIMARY DRIVE

TRANSMISSION & FINAL DRIVE

GASKETS & HARDWARE

HANDLEBARS & CONTROL

CABLES

FOOT CONTROL

INSTRUMENT & LIGHTING

ELECTRICAL

BATTERIES & CHARGERS

TRAILERS & RAMPS

CHEMICALS & LUBES

TOOLS & SUPPLIES

GENERAL ACCESSORIES & DISPLAY

CROSS REFERENCE

INDEX

SECURITY & COVERS



DOWCO® GUARDIAN WEATHERALL PLUS EZ ZIP MOTORCYCLE COVER

Includes all of the features of the WeatherAll Plus Covers; plus easy on and off zipper to make installation and removal easy; quick access to rear storage on bike.



Description	P/N	Retail
XL, Fits Touring & Full Dress Up to 1400cc	105085	135.99
2XL, Fits Large & Sport Touring Bikes 1500cc & Up	105090	139.99
3XL, Fits Touring & Full Dress 1800cc & Up	105095	145.99



DOWCO® GUARDIAN WEATHERALL MOTORCYCLE COVER

Made with ClimaShield®, a heavy-duty, waterproof, breathable, 300-denier, coated polyester fabric with a durable, water-repellent top coat and a polyurethane and mildew-resistant undercoating; this material provides excellent protection against rain, mildew and fading caused by the sun's UV rays. All seams are taped to ensure maximum waterproofing. Soft cotton is used to protect the windshield. Cover can be placed on the bike while hot, as heat shield material is used in places that may come in contact with hot pipes. Moisture Guard® vent system prevents moisture build up under the cover. Elastic shock cord is sewn into the bottom of the cover to provide a snug fit. Polyester webbing belly strap is sewn-in to prevent the cover from coming off in high winds. Plastic grommets allow the use of a cable to lock the cover to the bike.

- Includes storage bag
- Five-year limited manufacturer's warranty



Description	P/N	Retail
Grey, M, Fits Bikes w/Small Fairings	104950	81.99
Grey, L, Fits Bikes w/Fairing and Bags Sport/Custom - 500-1400cc	105000	87.99
Grey, XL, Fits Touring/Full Dress Large Bikes	105025	92.99
Grey, 2XL, Fits Touring/Full Dress 1500cc and Up	105050	97.99
Grey, 3XL	105075	102.99
XL, For Use With Sportbikes	105080	92.99



DOWCO® ULTRALITE PLUS COVER

Storage bag is sewn into the cover for quick and easy storage; when cover is in use, this exterior storage compartment can be used for gloves, sunglasses or other items. Cover is made with a 75-denier, rip-stop polyester with polyurethane and mildew-resistant undercoating for enhanced water and mildew resistance. It's not waterproof, but very close, so you will not have a wet butt after a rain shower.

Two sewn-in vents allow moisture to escape. Soft cotton protects the windshield. Elastic shock cord is sewn into the bottom of the cover to provide a snug fit. Polyester webbing belly strap is sewn-in to prevent the cover from coming off in high winds. Plastic grommets allow the use of a cable to lock the cover to the bike.

- Three-year limited manufacturer's warranty



Description	P/N	Retail
M, Fits Sportbikes/Small Cruisers w/o Windshield	106625	54.99
L, Fits Large Cruisers/Touring/Sport Touring	106626	59.99
XL, Fits Large Touring	106627	63.99



AUDIO, VIDEO
& NAVIGATION

INDIAN
& VICTORY

WINDSHIELDS

SEATS &
SISSY BARS

LUGGAGE

SECURITY
& COVERS

TIRES &
WHEELS

BRAKES

CHASSIS

SUSPENSION

SHEET METAL

EXHAUST

FUEL & AIR
SYSTEMS

ENGINE &
OIL FILTERS

PRIMARY DRIVE

TRANSMISSION
& FINAL DRIVE

GASKETS &
HARDWARE

HANDLEBARS
& CONTROL

CABLES

FOOT
CONTROL

INSTRUMENT
& LIGHTING

ELECTRICAL

BATTERIES &
CHARGERS

TRAILERS
& RAMPS

CHEMICALS
& LUBES

TOOLS &
SUPPLIES

GENERAL
ACCESSORIES
& DISPLAY

CROSS
REFERENCE

INDEX



DOWCO® GUARDIAN ULTRALITE COVER

Cover is made with a 70-denier polyester with polyurethane and mildew-resistant undercoating for enhanced water resistance. It's not waterproof, but very close, so you will not have a wet butt after a rain shower. This material also has a treatment to prevent mildew. One sewn-in vent allows moisture to escape. Soft cotton protects the windshield. Elastic shock cord is sewn into the front and back of the cover.

- Includes storage bag
- Two-year limited manufacturer's warranty

Note: Wait for bike to cool before applying cover.



Description	P/N	Retail
Grey, M, Fits Touring Bikes	106630	40.99
Blue, M, Fits Sportbikes	106633	40.99
Grey, L, Fits Touring Bikes	106631	44.99
Blue, L, Fits Touring Bikes	106635	44.99
Grey, L, Fits Touring Bike With Fairing	106632	49.99
Blue, XL, Fits Touring Bike With Fairing	106637	49.99



DOWCO® PREMIUM HALF-COVER

Hook-and-loop access in the rear to allow antennas to easily pass through while in use. Elastic footboard straps for secure fit. Reflective piping for added nighttime visibility and safety. Shock cord in hem ensures cover stays put.

P/N	Retail
104929	94.99



DOWCO® GUARDIAN TRAVELER

Half-cover designed to be a lightweight cover to keep moisture and the sun's heat off your seats, dash and other essential parts of your bike. Cover is made with a 70-denier polyester with polyurethane and mildew-resistant undercoating for enhanced water resistance. It's not waterproof, but very close, so you will not have a wet butt after a rain shower. This material also has a treatment to prevent mildew. Elastic shock cord is sewn into the bottom of the cover to provide a snug fit.

- Includes two footpeg straps to securely hold cover to bike in high winds
 - Two-year limited manufacturer's warranty
- Note: Wait for bike to cool before applying cover.



Description	P/N	Retail
XL, Fits Touring and Full Dress	107000	45.99
Sport, Fits Small Cruisers/Sportbikes	107005	39.99



AUDIO, VIDEO
& NAVIGATION

INDIAN
& VICTORY

WINDSHIELDS

SEATS &
SISSY BARS

LUGGAGE

SECURITY
& COVERS

TIRES &
WHEELS

BRAKES

CHASSIS

SUSPENSION

SHEET METAL

EXHAUST

FUEL & AIR
SYSTEMS

ENGINE &
OIL FILTERS

PRIMARY DRIVE

TRANSMISSION
& FINAL DRIVE

GASKETS &
HARDWARE

HANDLEBARS
& CONTROL

CABLES

FOOT
CONTROL

INSTRUMENT
& LIGHTING

ELECTRICAL

BATTERIES &
CHARGERS

TRAILERS
& RAMPS

CHEMICALS
& LUBES

TOOLS &
SUPPLIES

GENERAL
ACCESSORIES
& DISPLAY

CROSS
REFERENCE

INDEX

SECURITY & COVERS



DOWCO® GUARDIAN INDOOR DUST COVER

Made with a 10 oz. cotton canvas with water-resistant and mildew-resistant coatings; this is the perfect material for indoor storage due to its ability to allow moisture to escape while keeping dust and dirt off the bike. The underside of the cover has napped soft cotton that provides maximum protection for all surfaces of your bike. Elastic shock cord sewn into the bottom of the cover to provide a snug fit. Reinforced grommets allow the use of a cable to lock the cover to the bike.

- Lifetime limited manufacturer's warranty
- Made in USA



Description	P/N	Retail
Fits Large Cruisers/Small Touring Models	105251	93.99
Fits Vintage/Sport Models	105252	98.99
Fits Large Touring Models	105253	123.99
96 in., Fits Custom Choppers	105250	116.99
109 in., Fits Custom Choppers	105255	122.99
124 in., Fits Custom Choppers	105260	135.99

DOWCO® MOTORCYCLE FITMENT CHART

Application	Weatherall™			Ultralite®			Duster™	Traveler™	Store Away™	PVC
	Plus	EZ-Zip™	Weatherall®	Plus	UltraLite®					
FLHR Electra Glide /										
FLHR Road King / Classic	XL	XL	XL	L	L	XXXL	XL	XL	XL	XL
FLHRS Road King Custom /										
FLHS Electra Glide Sport	XL	XL	XL	L	L	XXXL	SP	XL	XL	XL
FLHT Electra Glide Standard /										
FLHT-C Electra Glide / Classic	XL	XL	XL	L	L	XXXL	XL	XL	XL	XL
FLHT-C Ultra Classic Electra Glide /										
Ultra Unlimited	XL	XL	XL	L	L	XXXL	XL	XL	XL	XL
FLHX Street Glide	XL	XL	XL	L	L	XXXL	XL	XL	XL	XL
FLSTC Heritage Softail Classic	XL	XL	XL	L	L	XXXL	SP	XL	XL	XL
FLSTF Fat Boy	CR / L		L	L	L	L	SP	XL	XL	XL
FLSTS Heritage Springer /										
FLSTSB Softail Crossbones	CR / L		L	L	L	L	SP	XL	XL	XL
FLTC Ultra Classic Tour Glide /										
FLTR Road Glide / FLTRX	XL	XL	XL	L	L	XXXL	XL	XL	XL	XL
Dyna Super Glide T Sport	L		L	L	L	L	SP	XL	XL	XL
FXD Dyna Super Glide	CR / M		M	M	M	M	SP	L	L	L
FXCWC Softail Rocker	CR / L		L	L	L	L	XL	XL	XL	XL
FXD w/windshield /										
FXDS Dyna Convertible	CR / L		L	L	L	L	XL	XL	XL	XL
FXDB Street Bob	CR / M		M	M	M	M	SP	L	L	L
FXDF Fat Bob	CR / M		M	M	M	M	SP	L	L	L
FXDL Dyna Low Rider	CR / M		M	M	M	M	SP	L	L	L
FXDWG Dyna Wide Glide	CR / M		M	M	M	M	SP	L	L	L
FXLR w/windshield	CR / L		L	L	L	L	SP	XL	XL	XL
FXR Low Rider/FXR Super Glide	CR / M		M	M	M	M	SP	L	L	L
FXRT Sport Glide	L		L	XL	XL	L	SP	XL	XL	XL
FXST Softail	CR / L		L	L	L	L	SP	XL	XL	XL
FXSTB Night Train	CR / L		L	L	L	L	SP	XL	XL	XL
FXSTD Softail Deuce	CR / L		L	L	L	L	n/a	XL	XL	XL
FXSTS Springer Softail	CR / L		L	L	L	L	SP	XL	XL	XL
FXSTSB Bad Boy	CR / L		L	L	L	L	SP	XL	XL	XL
FXSTSI Softail	CR / L		L	L	L	L	SP	XL	XL	XL
Softail Deluxe	CR / L		L	L	L	L	SP	XL	XL	XL
Softail Springer CI	CR / L		L	L	L	L	SP	XL	XL	XL
Sportsters (All)	SP / M		SP / M	M	M	M	SP	L	L	L
V-Rod	CR / L		L	L	L	L	SP	XL	XL	XL



ULTRAGARD® CLASSIC HALF-COVERS

Breathable, water-resistant, lightweight polyester. Double-stitched, four-fold interlocking seams. Elastic hem. Flannel windshield protection. Rustproof grommets. UltraGard vent system. High-visibility reflective logo.

- Storage pouch
- Five-year manufacturer's warranty



Size	Color	P/N	Retail
Cruiser Half	Black	417836	40.95
Cruiser Half	Grey	417837	40.95
Touring Half	Cranberry	417654	40.95
Touring Half	Grey	417807	40.95
Touring Half	Black	417835	40.95



ULTRAGARD® DELUXE TRIKE COVER

Constructed of water-resistant, polyurethane-coated polyester providing excellent protection against weather, dirt, pollution and prying eyes. UV-stabilized to maximize fabric life and minimize color fade from sun exposure. Heat shield protection with double-stitched, four-fold interlocking seams provide unmatched durability and weather-tight closure. Softek windshield liners and antenna wear pads ensure your ride is protected long after you cover it.

- Five-year prorated manufacturer's warranty



Color	P/N	Retail
Black/Charcoal	417724	79.95
Cranberry/Black	417655	79.95
Grey/Black	418570	79.99



Black/Charcoal



Cranberry/Black

ULTRAGARD Fitment Chart

Medium Covers Fit:	Harley-Davidson®-Sportster Models
Large Covers Fit:	Excelsior/Henderson-All Harley-Davidson®-Bad Boys, Dyna Superglide, Fat Boy, FX Models, Heritage Softail, FLHT/FLHR Indian-All
X-Large Covers Fit:	Harley-Davidson®-FLHTCU (Ultra Classic) Mfg/N 4-464 Harley-Davidson®-Baggers Mfg/N 4-472
Half Covers Fit:	Harley-Davidson® FLHTCU

AUDIO, VIDEO
& NAVIGATION

INDIAN
& VICTORY

WINDSHIELDS

SEATS &
SISSY BARS

LUGGAGE

SECURITY
& COVERS

TIRES &
WHEELS

BRAKES

CHASSIS

SUSPENSION

SHEET METAL

EXHAUST

FUEL & AIR
SYSTEMS

ENGINE &
OIL FILTERS

PRIMARY DRIVE

TRANSMISSION
& FINAL DRIVE

GASKETS &
HARDWARE

HANDLEBARS
& CONTROL

CABLES

FOOT
CONTROL

INSTRUMENT
& LIGHTING

ELECTRICAL

BATTERIES &
CHARGERS

TRAILERS
& RAMPS

CHEMICALS
& LUBES

TOOLS &
SUPPLIES

GENERAL
ACCESSORIES
& DISPLAY

CROSS
REFERENCE

INDEX

SECURITY & COVERS



417659



417622



417621



417656



417617



417657



417619



417658



417815

ULTRAGARD® CLASSIC COVER

Tailor-fit designs take into account the natural stance of your motorcycle. Water-resistant, polyurethane-coated polyester, protects against weather, dirt and pollution. UV-stabilized to maximize fabric life and minimize color fading from sun exposure. Scorch-resistant heat shield protects the cover from hot exhaust pipes and allows use of cover immediately after riding. Double-stitched, four-fold interlocking seams to provide the best durability and water-tight closure. Zippered windshield and sissy bar pockets on cruiser covers expand to fit many bike configurations. SoftTec windshield lines to prevent scratching. Large, rustproof grommets prevent tearing. Sewn elastic hem and bungee cord ensures a tight custom fit. High-visibility reflective logo adds safety while parked. Convenient and compact storage pouch is easily portable.

- Five-year manufacturer's warranty



Fitment Guide

ON PAGE
447

Size	Color	P/N	Retail
M	Black/Charcoal	417621	49.95
M	Charcoal/Black	417622	49.95
M	Cranberry/Black	417656	49.95
L	Black/Charcoal	417617	59.95
L	Charcoal/Black	417618	59.95
L	Cranberry/Black	417657	59.95
Large Touring	Black/Charcoal	417619	59.95
Large Touring	Charcoal/Black	417620	59.95
Large Touring	Cranberry/Black	417658	59.95
XL Bagger	Charcoal/Black	417815	74.95
XL Bagger	Cranberry/Black	417659	74.95
XL Bagger	Black/Charcoal	417492	74.95
Trailer	Cranberry/Black	417540	29.95
Trailer	Black/Charcoal	417541	29.95

KURYAKYN



412352



412353

NEW!

KURYAKYN® PRIMOSHIELD COVERS

Lightweight, compact and water-resistant bike covers offered in full or half sizes.

- Soft fabric liner protects your windshield and fairing from abrasion
- Elastic hem coupled with reinforced grommets and shock cords to ensure a great fit
- Bottom panels are heat/scorch resistant
- Universal fitment

Description	Color	P/N	Retail
Full Cover	Black	412352	69.99
Full Cover	Silver	412353	69.99
Half Cover	Black	412354	54.99
Half Cover	Silver	412355	54.99



412355



BIKE BUMPER™ BIKE BUMPER

The Bike Bumper is a simple, effective and inexpensive solution to paint damage. A revolution in motorcycle fairing protection ensuring the highest level of security when transporting or storing motorcycles. Never again have to deal with scuffed or chipped paint from the dangers of hauling or winter parking. Provides the ultimate in fairing protection; the Biker Bumper adds an extra layer of security keeping accidents from becoming costly. Double-layered padding keeps bike safe from rocks and road debris, jostling trailer straps, other bikes and equipment and maintains peace of mind. Extra-thick neoprene padding at the outer edges ensures even more protection for the most vulnerable parts of the fairing by completely surrounding the outer edge. High-durability elastic straps clip to the Bike Bumper and attach around the front turn signals to keep the protector completely secured to the fairing.

- Fits all Road Glide Models

P/N	Retail
218278	64.95



AUDIO, VIDEO
& NAVIGATION

INDIAN
& VICTORY

WINDSHIELDS

SEATS &
SISSY BARS

LUGGAGE

SECURITY
& COVERS

TIRES &
WHEELS

BRAKES

CHASSIS

SUSPENSION

SHEET METAL

EXHAUST

FUEL & AIR
SYSTEMS

ENGINE &
OIL FILTERS

PRIMARY DRIVE

TRANSMISSION
& FINAL DRIVE

GASKETS &
HARDWARE

HANDLEBARS
& CONTROL

CABLES

FOOT
CONTROL

INSTRUMENT
& LIGHTING

ELECTRICAL

BATTERIES &
CHARGERS

TRAILERS
& RAMPS

CHEMICALS
& LUBES

TOOLS &
SUPPLIES

GENERAL
ACCESSORIES
& DISPLAY

CROSS
REFERENCE

INDEX