



### ***Performance Engines***

X-Wedge® .....458

### ***Performance Parts***

Air Cleaners .....465

Belt Cover .....459

Camshafts .....461

Crankcases .....458

Crankshaft.....459

Cylinders & Pistons..... 460

Cylinder Heads .....463

Fuel Pump .....467

Oil Pump .....459

Pushrods .....462

Rocker Arms .....463

Rocker Covers.....464

Tappets .....462

Valve Springs .....462

***Replacement Parts ..468***

# X-WEDGE® PERFORMANCE ENGINES

## FITMENT

- Custom X-Wedge chassis
- Performance engines for closed course competition or display vehicles
- 49 State and 50 State emissions compliant engines for the street.

## FEATURES AND BENEFITS

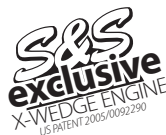
- 117 or 132 cubic inch displacement
- 56° cylinder angle – reduced piston interference and less vibration
- Unique belt driven, three cam design – better pushrod angles and reduced noise
- Forged one-piece crankshaft with automotive style plain bearings
- Automotive style low mass rocker arms
- Gerotor style oil pump
- S&S closed loop fuel injection with knock sensing ignition
- Easy Start cams: 548 cams for 117" and 569 cams for 132"

## OPTIONS

- Choice of silver powdercoat, wrinkle black (WBlack) powdercoat or polished finish
- 49-state or 50-state compliant versions (includes Full documentation and X117C includes an evaporative emissions hardware kit)

## KIT CONTENTS

- Fully assembled engine
- Fuel injection and Ignition system



WATCH THE X-GLIDE VIDEOS AT  
[www.sscycle.com/videos](http://www.sscycle.com/videos)

## SPECIFICATIONS S&S® X-WEDGE® PERFORMANCE ENGINES

Engine	Chassis Style	Displacement	Cylinder Angle	Bore	Stroke	Compression Ratio	Fuel System	Ignition
X117	S&S X-Wedge®	117"	56.25°	4 1/8"	4 3/8"	9.75:1	S&S Closed Loop Single Bore VFI	S&S VFI w/Knock Sensing

## S&S® X-WEDGE® 49-STATE AND 50-STATE ENGINES

Engine	Certification	Warranty	Silver	MSRP	WBlack	MSRP	Polished	MSRP
X117E	49-State	2 year	<b>31-8061</b>	\$9,110.00	<b>31-8060</b>	\$9,110.00	<b>31-8062</b>	\$9,675.00
X117C	50-State	2 year	<b>106-3753</b>	\$9,110.00	<b>106-3752</b>	\$9,110.00	<b>106-3754</b>	\$9,675.00

## COMPLETE ENGINE REBUILD GASKET KITS

S&S Engine Family	Year Group	Bore Size	Part No	MSRP
X-Wedge®	Custom	4 3/8"	<b>106-1031</b>	\$188.50
X-Wedge®	Custom	4 1/4"	<b>106-1029</b>	\$174.00
X-Wedge®	Custom	4 1/8"	<b>106-1030</b>	\$174.00

# CRANKCASES

## FITMENT

- X-Wedge® engines

## FEATURES AND BENEFITS

- Cylinder deck height of 6.125" and will accommodate 4 1/8" up to 4 3/8" bore cylinders without modification.

## OPTIONS

- Silver powder coat, wrinkle black (WBlack) powder coat, or polished finish

## KIT CONTENTS

- S&S crankcase, hardware, seals

## CRANKCASE KITS FOR S&S X-WEDGE® ENGINES

Finish	Part No.	MSRP
Silver powder coat	<b>106-0604</b>	\$2,010.85
WBlack powder coat	<b>106-0605</b>	\$2,010.85
Full Polish	<b>106-0603</b>	\$2,721.89



106-0604

**NOTE**

S&S recommends using Permatex Right Stuff® for sealing crankcases.

**REPLACEMENT PARTS: SEE PAGE 468**

# CRANKSHAFTS

## FITMENT

- X-Wedge® engines

## FEATURES AND BENEFITS

- Crankshafts are machined and ready to assemble with standard bearings.

## KIT CONTENTS

- Crank assembly includes rods



106-0607

### CRANKSHAFTS FOR S&S® X-WEDGE® ENGINES

Engine	Stroke	Crankshaft Only	MSRP	Crankshaft Assembly	MSRP
X117/X132	4 $\frac{3}{8}$ "	<b>106-0607</b>	\$1,298.57	<b>106-0609</b>	\$1,406.74
X114/X121/X128	4 $\frac{1}{4}$ "	<b>106-0606</b>	\$1,298.57	<b>106-0608</b>	\$1,406.74

**ANY JOB IS EASY WITH THE RIGHT TOOLS**  
**S&S CRANKSHAFT MAIN BEARING**  
**PROTECTOR FOR X-WEDGE®**  
**SEE PAGE 494**

# CONNECTING RODS

## FITMENT

- X-Wedge® engines

## FEATURES AND BENEFITS

- These forged rods are 7.400" plain bearing, automotive style, with a two piece design, 2.200" journal diameter, and .927" wristpin diameter
- Since the front and rear rods are identical, rods are not sold in sets but are available individually
- Bearings are not included and must be purchased separately

### S&S CONNECTING RODS FOR X-WEDGE® ENGINES

Description	Part No.	MSRP
Connecting Rod Front or Rear	<b>106-0583</b>	\$209.84
Bearing Inserts Standard	<b>106-0569</b>	\$35.61
Bearing Cap Screws 12 pt, $\frac{7}{16}$ "-20 x 1.60"	<b>50-0346-S</b>	\$11.80



106-0583

106-0569

# BELT COVERS

## FITMENT

- Direct replacement for the belt cover on any X-Wedge engine



### X-WEDGE® BELT COVERS

Chrome	106-0587	\$253.75
--------	----------	----------

**REPLACEMENT PARTS: SEE PAGE 469**

# OIL PUMP

## FITMENT

- Direct replacement for the oil pump in any X-Wedge engine



### X-WEDGE® OIL PUMP KIT

For X-Wedge Engines	<b>106-0680</b>	\$347.61
---------------------	-----------------	----------

**REPLACEMENT PARTS: SEE PAGE 474**



# CYLINDERS & PISTONS FOR S&S® X114, X117 & X121 X-WEDGE® ENGINES

## FITMENT

- X114, X117 & X121 X-Wedge engines

## FEATURES AND BENEFITS

- The front and rear cylinders and pistons are interchangeable
- Cylinders can be honed to the specified size and any piston of the correct oversize will fit with the correct clearance.

## OPTIONS

- Silver powder coat, wrinkle black (WBlack) powder coat, or polished finish

### INDIVIDUAL CYLINDERS ONLY FOR S&S® X-WEDGE® ENGINES

Displacement	Stroke	Bore	Cylinder Length	Compression Ratio	Silver	MSRP	WBlack	MSRP	Full Polished	MSRP
117"	4.375"	4.125"	4.645"	9.75:1	<b>91-7461</b>	\$323.73	<b>91-7463</b>	\$323.73	<b>91-7465</b>	\$439.84
121"	4.25"	4.25"	4.645"	9.75:1	—	—	<b>91-7469</b>	\$323.73	<b>91-7471</b>	\$439.84

Pistons are sold separately. See chart below.

### FORGED INDIVIDUAL PISTONS FOR S&S® X-WEDGE® ENGINES

Displacement	Standard	MSRP
114"	<b>106-0108</b>	\$256.30
117"	<b>106-0108</b>	\$256.30
121"	<b>106-0109A</b>	\$251.43

All individual pistons include one piston, rings, wristpin, and clips. Due to piston coating, piston measurements are not reliable. Bore cylinders to nominal diameter +/- .0005" for correct clearance.

### REPLACEMENT WRISTPINS AND KEEPERS

Description	Part No.	MSRP
Wristpin	X114 & X117 & X121 <b>106-1000</b>	\$11.60
Keeper	All Displacements <b>94-9278-S</b>	\$2.46



Pistons are sold separately

91-7461

### REPLACEMENT MOLY FACED RINGS FOR X-WEDGE PISTONS

Description	Standard	MSRP
X114 & X117	2 pack <b>106-0011</b>	\$143.11
X121	1 pack <b>106-0709A</b>	Call For Pricing
	2 pack <b>106-0012</b>	\$95.95

### X-WEDGE® GASKETS & DOWELS

Description	Bore	Part No.	MSRP
Head Gasket	4 3/8"	each <b>93-1132</b>	\$25.74
	4 1/4"	each <b>93-1131</b>	\$11.02
	4 1/8"	each <b>93-1130</b>	\$11.86
Base Gasket	All	each <b>93-1120</b>	\$9.47
Dowel Pin .187" x .635"		each <b>50-8031</b>	\$1.03

# 4-3/8" BORE CYLINDERS & PISTONS UPGRADES FOR X-WEDGE® X128 AND X132 ENGINES

Increase the displacement of your X-Wedge engine with these bolt-on cylinder and piston kits. A 1/8" bore increase will take an X121 to X128, and a 1/4" bore increase will take an X117 to X132! No changes to the crankcases or flywheels are required.

## FITMENT

- S&S X-Wedge® engines

## FEATURES AND BENEFITS

- Bolt-on performance
- Increase displacement without crankcase modifications

## OPTIONS

- Silver powder coat, wrinkle black (WBlack) powder coat or polished finish



920-0004

910-0002

Pistons are sold separately

### 4 3/8" BORE CYLINDER ONLY SETS FOR S&S® X-WEDGE® ENGINES

Displacement	Stroke	Bore	Cylinder Length	Compression Ratio	Silver	MSRP	WBlack	MSRP	Full Polished	MSRP
132"	4.375"	4.375"	4.645"	10.3:1	<b>910-0002</b>	\$630.76	<b>910-0001</b>	\$630.76	<b>910-0003</b>	\$817.74

Cylinders are honed and ready for assembly. Cylinder sets include front and rear cylinders. Includes head and base gaskets. Pistons are sold separately. See chart below.

### FORGED PISTON SETS FOR S&S® X-WEDGE® ENGINES

Displacement	Standard	MSRP	+ .010"	MSRP
128"	<b>920-0003</b>	\$392.01	<b>920-0006</b>	\$392.01
132"	<b>920-0002</b>	\$392.01	<b>920-0004</b>	\$392.01

All piston sets are for two pistons and include rings, wristpin, and clips. Due to piston coating, piston measurements are not reliable. Bore cylinders to nominal diameter +/- .0005" for correct clearance.

### REPLACEMENT MOLY FACED RINGS FOR X-WEDGE PISTONS

Description	Standard	MSRP
X128 & X132	2 pack <b>94-4285X</b>	\$50.30

### REPLACEMENT WRISTPINS AND KEEPERS

Description	Part No.	MSRP
Wristpin	<b>94-9277</b>	\$16.15
Keeper	<b>94-9278-S</b>	\$2.46

### X-WEDGE® GASKETS

Description	Bore	Part No.	MSRP
Head Gasket	4 3/8"	each <b>93-1132</b>	\$25.74
Base Gasket	All	each <b>93-1120</b>	\$9.47

# CAM CHEST REPLACEMENT PARTS

## CAM CHEST REPLACEMENT PARTS

Description	Part No.	MSRP
Cam sprocket, 38-tooth	<b>106-0740</b>	\$20.72
Belt, cam drive, 127-tooth, 30mm	<b>106-0571</b>	\$123.86
Belt tensioner, 30mm	<b>370-0007</b>	\$177.10
Pinion Update Kit	<b>370-0015</b>	\$81.80



106-0571



106-0740

# CAM BEARING REPLACEMENT PARTS

## CAM BEARING REPLACEMENT PARTS

Description	Part No.	MSRP
Inner Cam Bearing for S&S X-Wedge®	<b>31-4080</b>	\$9.54
Outer Cam Bearing for S&S X-Wedge®	<b>106-1424</b>	\$11.66



# X-WEDGE® EASY START CAMS

## RECOMMENDED APPLICATIONS FOR S&S X-WEDGE CAMS

**548 CAMS** — Stock replacement cams for X114, X117, and X121 engines. Emissions compliance is maintained when these cams are installed. Use with stock pushrods. Non-interference.

**569 CAMS** — Bolt-in performance upgrade cams for any displacement X-Wedge engine from 9.8:1 to 10.2:1 compression ratio. Use with stock pushrods. These cams are non-interference, but are not emissions compliant.

**618 CAMS** — Performance upgrade cams for any displacement X-Wedge engine from 9.8:1 to 10.2:1 compression ratio. The 618 cams can be installed as a bolt-in. The 618 cams are not non-interference cams, and are not emissions compliant. Due to the smaller diameter cam base circle, the X618 cams require a special, slightly longer pushrod set #930-0021, or billet aluminum rocker arm set #900-0213.



106-0577

**ANY JOB IS EASY WITH THE RIGHT TOOLS  
S&S CAM ALIGNMENT TOOLS  
FOR X-WEDGE®, SEE PAGE 494**

## S&S® X-WEDGE® EASY START CAMS SPECIFICATIONS

Cam Name	Valve Timing (open/close) <sup>1</sup>		Valve Duration		Valve Lift <sup>2</sup>	Centerline		Lift@TDC <sup>3</sup>	
	Intake	Exhaust	Intake	Exhaust		Intake	Exhaust	Intake	Exhaust
	Open BTDC/ Close ABDC	Open BBDC/ Close ATDC							
548	5°/55°	57°/0°	240°	237°	0.548"	115°	118.5°	0.136"	0.080"
569	9°/40°	47°/17°	229°	244°	0.569"	105.5°	104.5°	0.137"	0.179"
618	9°/43°	62°/23°	232°	264°	0.618"	107°	109°	0.140"	0.224"

<sup>1</sup>Timing designation is a function of zero lash @ 0.053" off base circle.

<sup>2</sup>Valve lift is calculated from a 1.76:1 ratio rocker arm.

<sup>3</sup>TDC lift is measured at the valve and is for reference only.

## S&S® X-WEDGE® CAM KITS

548 (3 cams)		569 Easy Start (3 cams)		618 Easy Start (3 cams)	
<b>106-0577</b>	\$443.64	<b>330-0047</b>	\$443.64	<b>330-0074</b>	\$443.64

## COMPRESSION RELEASE 548 UPDATE KIT

(2 exhaust cams)	<b>106-3809</b>	\$424.95
------------------	-----------------	----------

DISCLAIMER: NOT LEGAL FOR SALE OR USE IN CALIFORNIA ON ANY POLLUTION CONTROLLED MOTOR VEHICLE. Not legal for sale or use on any EPA pollution controlled motor vehicle.

# HIGH PERFORMANCE HYDRAULIC TAPPETS



## S&S® HIGH PERFORMANCE HYDRAULIC TAPPETS

Tappet, Hydraulic, X-Wedge®	each	37-0030	\$31.42
-----------------------------	------	---------	---------

**NOTE**

Tappets for S&S X-Wedge engines are not designed for use with S&S HL<sub>2</sub>T limited travel kits.

## TAPPET COVERS

### OPTIONS

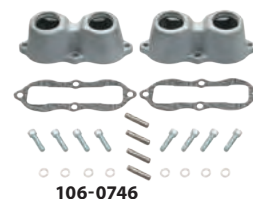
- Silver powder coat, wrinkle black powder coat, or polished finish

### KIT CONTENTS

- Two tappet guides, gaskets, dowel pins, and mounting hardware

### TAPPET COVER KITS FOR S&S® X-WEDGE®

Silver Powdercoat	106-0746	\$104.86
Wrinkle Black Powdercoat	106-0747	\$104.86
Polished	106-0745	\$115.36



106-0746

### REPLACEMENT PARTS

Gasket	each	37-0006	\$6.92
--------	------	---------	--------

## PUSHRODS

### PUSHRODS FOR S&S® X-WEDGE®

Description	Part No.	MSRP
X-Wedge® Pushrod Sets – All displacements with stock rocker arms		
Stock Length (for use with 545, 548 and 569 cams)	106-0699	\$83.89



106-0699

## SIDEWINDER® VALVE SPRINGS

### FEATURES AND BENEFITS

585 Sidewinder Springs:

- Lower spring force results in reduced valve train noise, increased valve stability, and longer valve train component life
- Stock replacement in X-Wedge

### KIT CONTENTS

- Valve keepers, springs, top collars, bottom collars, 0.015" and 0.030" shims



900-0595

### S&S® SIDEWINDER® VALVE SPRINGS SPECIFICATIONS

Lift	Installed Height	Seat Force	Force @ Max Lift	Max RPM
.585"	2.00"	85 lb.	264 lb.	5750

### REPLACEMENT PARTS: SEE PAGE 470

### S&S® SIDEWINDER® VALVE SPRING KITS

Description	Part No.	MSRP
.585" lift	900-0595	\$122.36

# ROLLER ROCKER ARM KIT

## FITMENT

- X-Wedge® engines – all displacements
- Works with any cam

## FEATURES AND BENEFITS

- Automotive style billet aluminum rockers with roller tips and needle fulcrum bearings
- Increased cam lift
- Increase your ratio to 1.80 from the 1.76 stock
- Aluminum construction reduces weight
- Friction reducing bearings and rollers
- Allows for tappet adjustment

### ROLLER ROCKER ARM KIT FOR S&S® X-WEDGE® ENGINES

S&S® Roller Rocker Arm Kit	<b>900-0213</b>	\$394.95
----------------------------	-----------------	----------

900-0213



## REPLACEMENT GASKETS

Rocker Cover Gaskets	each	<b>39-0010A</b>	\$14.37
	2 pack	<b>106-0622</b>	\$25.46

# CNC PORTED CYLINDER HEADS

## FITMENT

128" and 132" X-Wedge engines

## FEATURES AND BENEFITS

- CNC machined ports for a consistent performance increase from original heads
- Choice of two different chamber machinings (100cc or 103cc)
- Great throttle response, high velocity port without losing low RPM torque
- Assembled with performance valves and .650 springs

## FINISH OPTIONS:

- Full polished, silver, wrinkle black powdercoat

## SERVICE OPTIONS

- Buy New CNC, or...
- Rework Service
  - Heads sent to S&S
  - Get the same set of heads back with CNC machined ports & chambers
  - The best option for heads with a special cosmetic treatment
  - Allow 2 week turn-around
- Custom CNC Port Duplication
  - S&S can digitize your port design and machine it in your heads, ask an S&S customer service representative for details

### S&S CNC PORTING SERVICE FOR X-WEDGE® HEADS

Fitment	Part No.	MSRP
128" and 132" X-Wedge engines	<b>106-6480</b>	Call For Pricing

		Stock Heads	CNC Ported by S&S®
Valve Size	Intake	2.00"	2.2"
	Exhaust	1.605"	1.675"
Max "Free Spin" Valve Lift*		0.0580"	0.0580"
Port Flow	Intake	261.2 cfm	315 cfm
	Exhaust	190.8 cfm	215 cfm
Compression Ratio	128"	9.7:1	10:1
	132"	9.9:1	10.3
Cylinder Heads Decked		—	0.030"
Chamber Volume		104 cc	100 cc**

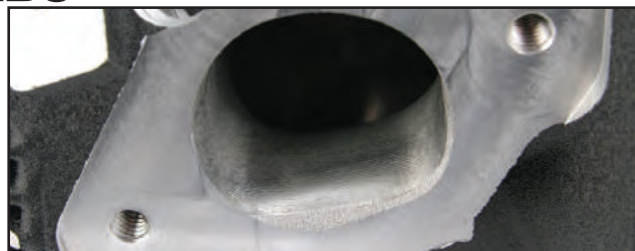
\*Free Spin" valve lift controlled by valve reliefs in piston. \*\*After decking.

Flow testing performed on a SuperFlow® 1020 flow bench at 28" of water test pressure at .600" lift through radiused inlet.

CNC porting is not available for previously ported heads, heads that have been structurally damaged, or heads that are determined to be unserviceable during initial inspection. These heads will be returned to the customer without modification. In these cases customer will be notified and options reviewed. New CNC ported heads are available for purchase.

Due to variations in cylinder head castings, all inside surfaces of the ports may not "clean up" during machining. As a result, the inside of one or more ports may not appear to be completely machined. This does not effect performance and is not considered a defect.

DISCLAIMER: NOT LEGAL FOR SALE OR USE IN CALIFORNIA ON ANY POLLUTION CONTROLLED MOTOR VEHICLE. Not legal for sale or use on any EPA pollution controlled motor vehicle.



Shown is an intake port from a CNC machined X-Wedge® cylinder head. Notice the detailed machining that gives our CNC ported heads the performance that your big-inch engine demands.



Digitized port shapes are faithfully reproduced in X-Wedge cylinder heads on our 5-Axis CNC machining center. Intake port, exhaust port and combustion chamber are all modified. This head will be assembled with new valves and high lift valve springs to complete the package.

## INDIVIDUAL PARTS FOR X-WEDGE® CNC PORTED HEADS

Spring	<b>106-5689</b>	\$34.97
Intake Valve	<b>900-0275</b>	\$41.91
Exhaust Valve	<b>900-0276</b>	\$69.87
Valve Guide Seal	<b>900-0557</b>	\$1.95
Top Collar	<b>106-5690</b>	\$6.19
Bottom Collar	<b>106-3827</b>	\$7.65
Valve Keeper	each	<b>90-2094-S</b> \$2.19
	8 pack	<b>50-7166</b> \$15.65

# CYLINDER HEADS

## FITMENT

- All X-Wedge engines

## FEATURES AND BENEFITS

- .585" Street Performance springs
- Powder metal valve guides
- Completely assembled stock heads — ready to bolt-on

## OPTIONS

- Silver powder coat, Wrinkle Black (WBlack) powder coat, or Full Polished Finish



106-0644

### ASSEMBLED CYLINDER HEADS FOR S&S® X-WEDGE® ENGINES

Finish	Set	MSRP
Silver	<b>106-0646</b>	\$1,155.38
WBlack	<b>106-0647</b>	\$1,155.38
Full Polished	<b>106-0644</b>	\$1,588.67

REPLACEMENT PARTS: SEE PAGE 470

# HEAD BOLTS

Will fit any production X-Wedge engine regardless of displacement. 10 are required for complete replacement.



### S&S HEAD BOLT FOR S&S X-WEDGE ENGINES

Description	Part No.	MSRP
Head bolt (each)	<b>93-3028-S</b>	\$6.76
Washer (.150") (each)	<b>50-0418-S</b>	\$1.52

# ROCKER COVERS

## FITMENT

- Fits all S&S X-Wedge engines

## FEATURES AND BENEFITS

- OEM stock replacement — same as original equipment
- Covers are interchangeable for front or rear cylinder heads
- Die-cast aluminum with show chrome finish

## KIT CONTENTS

- Rocker cover(s), mounting hardware, gasket(s)



106-0593

### S&S® ROCKER COVERS FOR S&S® X-WEDGE®

Description	Part No.	MSRP
Single Rocker Cover (with hardware and gasket)	<b>106-0600</b>	\$231.72
Rocker Cover Set (with hardware and gaskets)	<b>106-0593</b>	\$405.01

REPLACEMENT PARTS: SEE PAGE 470



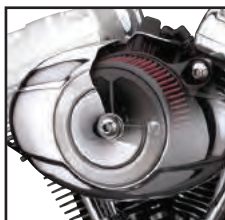
# STEALTH AIR CLEANER KITS

## FITMENT

- S&S X-Wedge Engines

## FEATURES AND BENEFITS

- Air directional stinger cone in the filter
- Can be used with any of several S&S designed covers
- Pre-filters and High flow (1" taller) filter kit available - See below

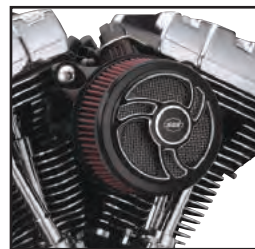


STEALTH

### S&S STEALTH AIR CLEANER KITS\*

Application	Fuel System	Part No.	MSRP
X-Wedge	EFI	<b>170-0200</b>	\$181.50

\*These kits do not contain covers — use a stock Twin Cam 88®, 96™ or 103™ cover or choose an S&S cover



TORKER



AIR 1



BOBBER-DISHED

### S&S BOBBER-DISHED COVER ONLY

Finish	Part No.	MSRP
Chrome	<b>170-0119</b>	\$96.83
WBlack	<b>170-0123</b>	\$96.83



TRI-SPOKE

### STEALTH COVER DESIGNS

Finish	Part No.	MSRP
Tri-Spoke	<b>170-0210</b>	\$141.78
Torker	<b>170-0206</b>	\$141.78
Air 1	<b>170-0214</b>	\$141.78



AIRSTREAM

### S&S AIRSTREAM COVER ONLY

Finish	Part No.	MSRP
Chrome	<b>170-0118</b>	\$142.80
WBlack	<b>170-0122</b>	\$142.80



BOBBER-DOMED

### S&S BOBBER-DOMED COVER ONLY

Finish	Part No.	MSRP
Chrome	<b>170-0120</b>	\$96.83
WBlack	<b>170-0124</b>	\$96.83



MUSCLE

### S&S MUSCLE COVER ONLY

Finish	Part No.	MSRP
Chrome	<b>170-0121</b>	\$137.66
WBlack	<b>170-0125</b>	\$132.57
WBlack with High-lighted Logo	<b>170-0190</b>	\$137.66

### S&S® HIGH FLOW AIR FILTER KIT

Description	Part No.	MSRP
High Flow Air Filter Kit (includes spacers), 1" Taller	<b>170-0127</b>	\$61.16

DISCLAIMER: NOT LEGAL FOR SALE OR USE IN CALIFORNIA ON ANY POLLUTION CONTROLLED MOTOR VEHICLE. Not legal for sale or use on any EPA pollution controlled motor vehicle.

# PRE-FILTERS

## FITMENT

- S&S® Stealth™ Air Filters

## FEATURES AND BENEFITS

- Water resistant
- Prevents large debris from prematurely clogging filter
- Washable Nylon
- Promotes longer filter life
- Reduces the risk of water entering air intake system

### S&S® PRE-FILTERS

Application	Part No.	MSRP
Standard	<b>170-0193</b>	\$24.28
1" Tall	<b>170-0197</b>	\$24.28



170-0197

# SINGLE BORE TUNED INDUCTION SYSTEM

## FITMENT

- S&S X-Wedge® engines

## FEATURES AND BENEFITS

- Bolt-on performance — over twice the filtering area over stock intake system
- Increases horsepower and torque across the rpm range using air column inertia and carefully timed gas dynamic pressure waves
- Smooth intake tract of carefully selected tuned lengths increases performance
- High flow washable and reusable cotton media provides performance, protection, and economy



## S&S SINGLE BORE TUNED INDUCTION SYSTEM KITS

Fitment	Fuel Delivery	Finish	Part No.	MSRP
<b>CTO</b>	Specify	Specify	<b>106-5337</b>	Call For Pricing

DISCLAIMER: NOT LEGAL FOR SALE OR USE IN CALIFORNIA ON ANY POLLUTION CONTROLLED MOTOR VEHICLE. Not legal for sale or use on any EPA pollution controlled motor vehicle.

**REPLACEMENT PARTS:  
SEE PAGE 472**

## S&S AIR FILTER COVERS

- Water resistant and filters out large debris, allowing the filter media to stop small dirt particles from getting into your engine
- Washable nylon

## S&S HIGH FLOW REPLACEMENT FILTER

- High flow washable and reusable cotton media provides performance, protection, and economy
- Choice of red or blue — red filters come standard with all S&S Single Bore Tuned Induction kits
- Kit includes one filter and one clamp

## S&S AIR FILTER OIL

- Use after cleaning the cotton media — brings back the vibrance of your filter
- Designed for S&S air filters and is available in red or blue



## ACCESSORIES

Description		Part No.	MSRP
Air Filter (each sold with clamp)	Red	<b>17-1020</b>	\$54.00
	Blue	<b>17-1023</b>	\$54.00
Air Filter Oil, 8 oz. Bottle	Red	<b>106-1163</b>	\$16.03
	Blue	<b>106-1164</b>	\$16.03
Nylon Air Filter Cover	each	<b>106-0247</b>	\$26.17
	2 pack	<b>106-0248</b>	\$47.15

# THROTTLE BODY

## S&S THROTTLE BODY

58mm	<b>106-3960*</b>	\$271.96
52mm	<b>106-3141</b>	\$271.25

\*DISCLAIMER: NOT LEGAL FOR SALE OR USE IN CALIFORNIA ON ANY POLLUTION CONTROLLED MOTOR VEHICLE. Not legal for sale or use on any EPA pollution controlled motor vehicle.

**REPLACEMENT PARTS: SEE PAGE 473**



**106-3960**

# FUEL PUMP FOR FUEL INJECTED CUSTOM BIKES

## FEATURES AND BENEFITS

- Mounts in nearly any tank
- Hollow mounting bolts secure the pump flange to the bottom of the tank and provide an outlet for wiring and pressurized fuel
- A fiber media filter, placed at the lowest point in the tank prevents contaminants from damaging the fuel pump

## KIT CONTENTS

- Fuel pump, inlet hose, an in-tank filter, mounting hardware, and instructions



**55-5089**

## S&S® IN-TANK FUEL PUMP SPECIFICATIONS

Manufacturer	Pressure	Capacity	Current Draw
Walbro	4 Bar/58 PSI	45 Lt/Hr	5 Amps

## NOTE

This is not a stock replacement pump for Harley-Davidson® motorcycles.

## S&S FUEL PUMP KIT

For Fuel Injected Custom Bikes	<b>55-5089</b>	\$636.78
--------------------------------	----------------	----------

## REPLACEMENT PARTS FOR FUEL PUMP

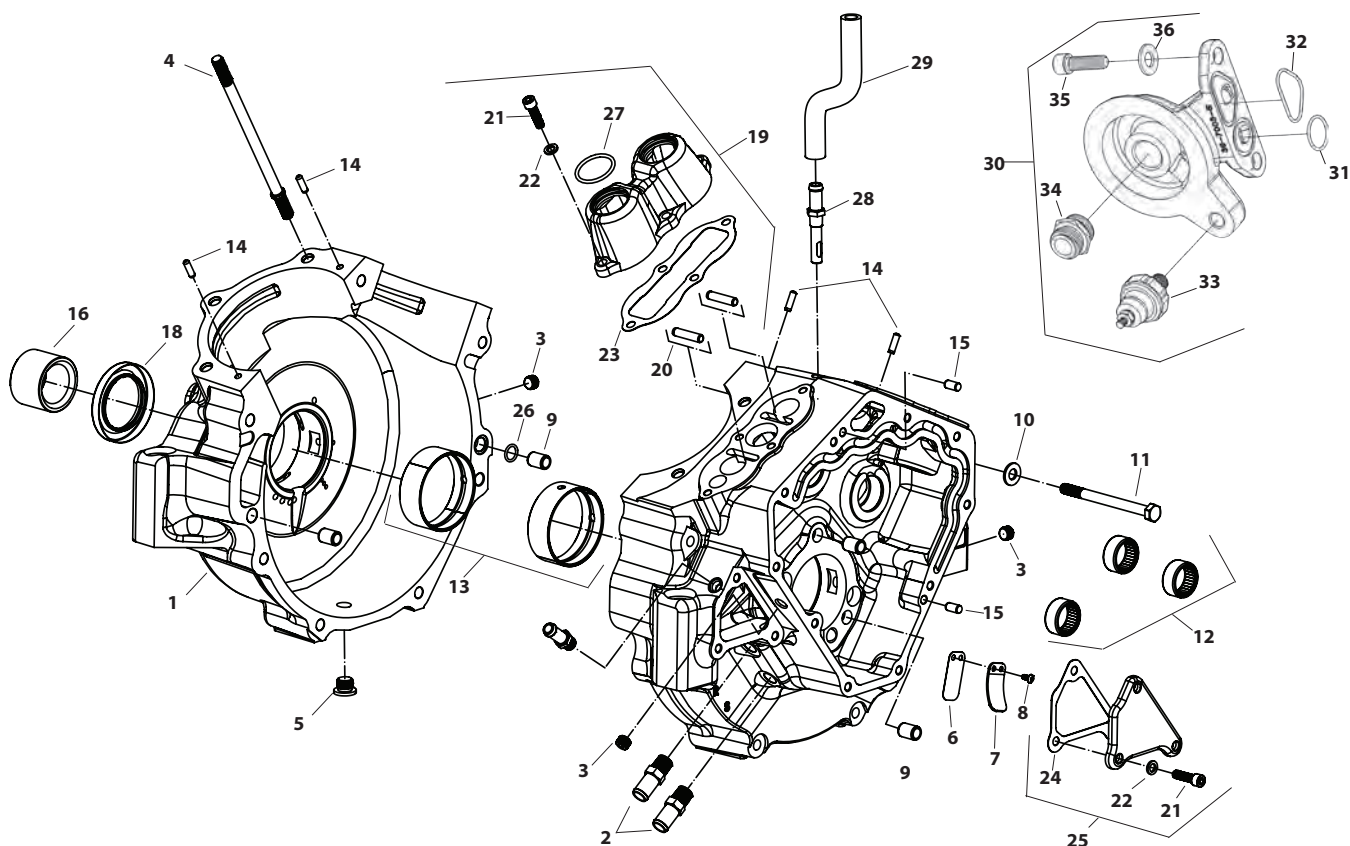
Filter	<b>19-0458</b>	\$17.41
O-Ring Kit	<b>55-5094</b>	\$65.57

# CRANKCASE REPLACEMENT PARTS FOR S&S® X-WEDGE® ENGINES

- |   |                  |          |
|---|------------------|----------|
| 1. Crankcase Set - See page 458   |                  |          |
| 2. Fitting, pipe, straight 1/4-18 NPTF x 1.510 x 1/2, zinc                            | <b>50-8158-S</b> | \$5.39   |
| 3. Plug 1/8-27 NPT with taper (each)  | <b>50-8331</b>   | \$1.00   |
| 10 pack   | <b>50-1015</b>   | \$5.83   |
| 4. Stud, cylinder base, 6.68", black oxide (each)                                     | <b>31-2321-S</b> | \$4.62   |
| 8 pack  | <b>31-2321</b>   | \$35.85  |
| 5. Transmission crankcase drain plugs with o-ring                                     |                  |          |
| Plug, magnetic, SH, 1/2-20  | <b>50-8335</b>   | \$11.18  |
| 6. Reed, breather valve, X-Wedge  | <b>36-7031</b>   | \$3.83   |
| 7. Stop, breather reed valve, X-Wedge   | <b>36-7032</b>   | \$3.57   |
| 8. Screw, BHS, 6-32 x 3/16", stainless steel  | <b>50-0060-S</b> | \$1.05   |
| 9. Pin, dowel, .438 diameter x .610 (each)  | <b>50-8177</b>   | \$2.26   |
| 4 pack  | <b>50-8177-4</b> | \$8.23   |
| 10. Washer, flat, 5/16 x 1/16 x 1/16  | <b>50-7034</b>   | \$0.26   |
| 11. Screw, HHCS, 5/16-18 x 3 3/4", zinc   | <b>50-0011</b>   | \$1.05   |
| 12. Bearing, assembly, inner, needle, cam, 1999-up BT                                 | <b>31-4080</b>   | \$9.54   |
| 13. Bearing, main journal, standard, plain  | <b>34-8640-S</b> | \$15.26  |
| 14. Dowel pin, .187" x .635" (each)   | <b>50-8031</b>   | \$1.03   |
| 15. Dowel pin, 1/4" x 1/2" (each)   | <b>50-8022</b>   | \$2.49   |
| 2 pack  | <b>50-8022-2</b> | \$4.46   |
| 5 pack  | <b>50-8105</b>   | \$5.25   |
| 16. Spacer, charging system, 1.75" x 1.25"  | <b>106-0736</b>  | \$27.23  |
| 17. Fitting, pipe, straight, male, chrome, steel, 1/8-27 NPTF x 1.344" x .375" (each) | <b>50-8129-S</b> | \$5.10   |
| 18. Left main bearing oil seal 1970-up BT (each)                                      | <b>31-4010</b>   | \$5.83   |
| 5 pack  | <b>31-4110</b>   | \$26.23  |
| 19. Tappet cover, set, X-Wedge  |                  |          |
| Polished  | <b>106-0745</b>  | \$115.36 |
| Silver  | <b>106-0746</b>  | \$104.86 |
| Wrinkle black   | <b>106-0747</b>  | \$104.86 |
| 20. Pin, dowel, .250" x 1.125"  | <b>50-8287</b>   | \$1.05   |
| 21. Screw, SHCS, 1/4-20 x 7/8"  |                  |          |
| Bright zinc   | <b>50-0025</b>   | \$0.52   |
| Chrome  | <b>106-0534</b>  | \$2.77   |
| 22. Washer, flat, .260" x .425" x .060", chrome, steel (each)                         | <b>50-7017</b>   | \$1.03   |
| 12 pack   | <b>50-7013</b>   | \$6.16   |
| 23. Gasket, tappet cover, X-Wedge (each)  | <b>37-0006</b>   | \$6.92   |
| 24. Gasket, reed pocket, X-Wedge (each)   | <b>36-0097</b>   | \$8.66   |
| 25. Cover, reed pocket, X-Wedge   |                  |          |
| Polished  | <b>106-0597</b>  | \$56.83  |
| Silver  | <b>106-0598</b>  | \$43.71  |
| Wrinkle black   | <b>106-0599</b>  | \$48.09  |
| 26. O-ring, oil feed line (-13), .437" I.D. x .565" O.D., Viton®                      |                  |          |
| each  | <b>50-8008</b>   | \$1.05   |
| 10 pack   | <b>50-8078</b>   | \$8.41   |
| 27. O-ring, bottom, pushrod tube (-122), 1.112" I.D. Viton                            | <b>50-7964-S</b> | \$1.52   |
| 28. Fitting, hose, straight, 1/8-27 NPTFx.500   | <b>50-8218-S</b> | \$40.73  |
| 29. Hose, vent, breather, .375" x .625"   | <b>106-3011</b>  | \$3.35   |
| 30. Bracket, oil filter, X-Wedge  |                  |          |
| Polished  | <b>106-0572</b>  | \$109.29 |
| Silver  | <b>106-0573</b>  | \$100.54 |
| Wrinkle black   | <b>106-0574</b>  | \$100.54 |
| 31. O-ring, Viton, -017   | <b>50-0466</b>   | \$1.15   |
| 32. O-ring, Viton, size -022 (each)   | <b>50-8005</b>   | \$1.25   |
| 33. Switch, oil pressure, X-Wedge   | <b>106-0744</b>  | \$20.94  |
| 34. Fitting, straight, 3/4-16 UNF 2a  | <b>50-8197-S</b> | \$6.46   |
| 35. Screw, SHC, 5/16-18 x 1, zinc   | <b>50-0101</b>   | \$0.57   |
| 36. Washer, flat, 5/16 x 1/16 x 1/16, zinc, steel                                     | <b>50-7034</b>   | \$0.26   |

## NOT SHOWN:

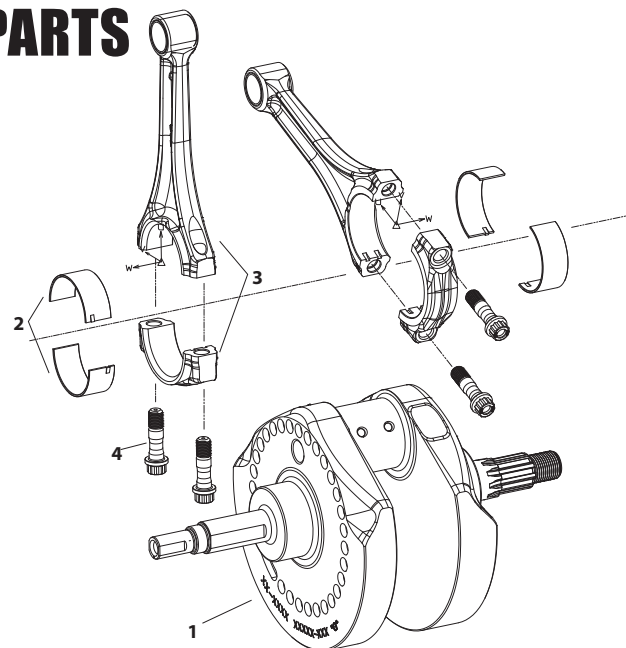
Crank position sensor **106-0734** \$87.43





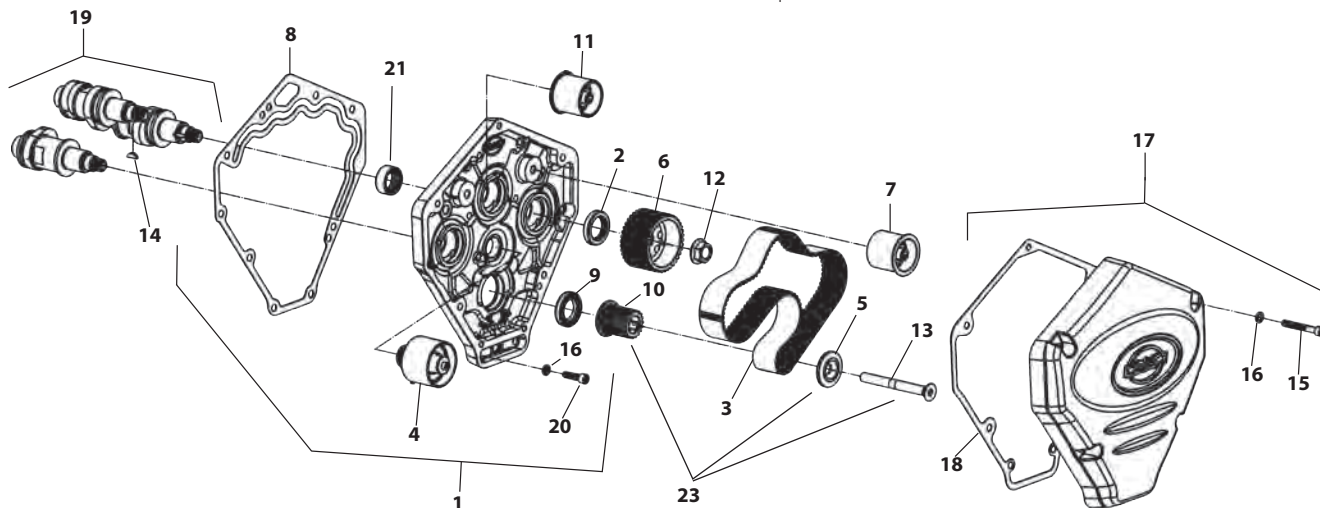
# CRANKSHAFT REPLACEMENT PARTS FOR X-WEDGE® ENGINES

- |  |                  |            |
|--|------------------|------------|
| 1. Crankshaft Assembly (includes #2, 3, 4)               |                  |            |
| All X-Wedge w/ 4 $\frac{3}{8}$ " stroke - X117/X132      | <b>106-0609</b>  | \$1,406.74 |
| All X-Wedge w/ 4 $\frac{1}{4}$ " stroke - X114/X121/X128 | <b>106-0608</b>  | \$1,406.74 |
| 2. Bearing Insert (4 pack)                               | <b>106-0569</b>  | \$35.61    |
| 3. Connecting Rod (each) - front or rear                 | <b>106-0583</b>  | \$209.84   |
| 4. Bearing Cap Screw (each)                              | <b>50-0346-S</b> | \$11.80    |



# CAMS AND RELATED VALVE TRAIN COMPONENTS REPLACEMENT PARTS

- |   |                  |          |
|---|------------------|----------|
| 1. Cover, intermediate cam (includes gasket and hardware) |                  |          |
| Polished  | <b>106-0590</b>  | \$217.46 |
| Silver  | <b>106-0591</b>  | \$258.10 |
| Wrinkle black   | <b>106-0592</b>  | \$217.46 |
| 2. Seal, cam cover/cam, .875" x 1.375" x .250", viton     |                  |          |
| each  | <b>37-0230</b>   | \$16.95  |
| 3. Belt, cam drive, 127 tooth, 30mm                       | <b>106-0571</b>  | \$123.86 |
| 4. Tensioner, belt, packaged, 30mm                        | <b>370-0007</b>  | \$177.10 |
| 5. Washer, pinion sprocket, flanged                       | <b>500-0324</b>  | \$13.11  |
| 6. Sprocket, cam, 38-tooth                                | <b>106-0740</b>  | \$20.72  |
| 7. Pulley, front, idler, 1.50" x 30mm                     | <b>106-0696</b>  | \$33.95  |
| 8. Gasket, intermediate cam cover                         | <b>37-0097</b>   | \$13.48  |
| 9. Seal, pinion, dual lip, 22mm x 35mm x 7mm              | <b>37-0044</b>   | \$17.49  |
| 10. Sprocket, pinion, 19-tooth                            | <b>N/A</b>       |          |
| 11. Pulley, rear, idler, 1.50" x 30mm                     | <b>106-0697</b>  | \$33.95  |
| 12. Nut, Jam, HH, 1/2-20, Zinc                            | <b>500-0325</b>  | \$1.05   |
| 13. Screw, torx, flat countersunk head, alloy steel       |                  |          |
| 3/8-24 UNF x 3 1/2"                                       | <b>500-0322</b>  | \$6.56   |
| 14. Key, woodruff, .125" x .500" x .491", steel           |                  |          |
| each  | <b>50-8223-S</b> | \$1.25   |
| 5 pack  | <b>50-1010</b>   | \$4.94   |
| 15. Screw, SHC, 1/4-20 x 1 3/4", chrome                   | <b>50-0488</b>   | \$3.79   |
| 16. Washer, flat, .260" x .425" x .060", chrome, steel    |                  |          |
| each  | <b>50-7017</b>   | \$1.03   |
| 12 pack   | <b>50-7013</b>   | \$6.16   |
| 17. Cover, belt drive                                     |                  |          |
| Chrome  | <b>106-0587</b>  | \$253.75 |
| 18. Gasket, belt drive cover                              | <b>106-0087</b>  | \$4.68   |
| 19. Camshaft, kit, .548                                   | <b>106-0577</b>  | \$443.64 |
| Camshaft, kit, .545                                       | <b>N/A</b>       |          |
| 20. Screw, SHCS, 1/4-20 x 7/8"                            | <b>50-0025</b>   | \$0.52   |
| 21. Bearing, assembly, outer                              | <b>106-1424</b>  | \$11.66  |
| 22. Installation kit (Not Shown)                          | <b>36-0481</b>   | \$220.23 |
| 23. Pinion Update Kit                                     | <b>370-0015</b>  | \$81.80  |



# CYLINDER HEAD REPLACEMENT PARTS FOR X-WEDGE® ENGINES

These are direct replacements for the heads included on engines used by our original equipment manufacturers such as Big Dog Motor Cycle® and Big Bear Choppers®. The same heads are used in our X117 engines sold to our dealers and distributors.

1. Head, kit, .585", SW steel, X-Wedge
  - Full polished..... **106-0644** \$1,588.67
  - Silver..... **106-0646** \$1,155.38
  - Wrinkle black..... **106-0647** \$1,155.38
2. Valve
  - Intake, 2" x 4.450", @ 1.943" gauge..... **90-2000** \$26.87
  - Exhaust, 1.605" x 4.428", @ 1.509" gauge..... **90-2001** \$60.53
3. Valve seat
  - Intake, 2.000"..... **90-2002** \$21.77
  - Exhaust, 1.605"..... **90-2003** \$51.57
4. Valve guide, intake/exhaust..... **106-2162** \$14.43
5. Head bolt, kit, S&S heads, w/washer, 12 pt
  - 3/8-16 x 1.940" x .950" TD..... **93-3028** \$9.31
6. Washer, .515" x .900" x .150"..... **50-0418-S** \$1.52
7. Gasket, exhaust, stainless steel (each)..... **106-5029** \$5.03
  - 10 pack..... **93-1072** \$44.43
8. Exhaust port stud 5/16" x 1.7" (each)..... **50-0493** \$2.65
  - 5 pack..... **50-1028** \$12.05
9. Screw, SHCS, 5/16-18 x 1", zinc..... **16-0136-S** \$2.99
10. Bolt, mounting, HH, grade 5, 5/16-18 x 1", zinc (each)..... **50-0108** \$1.05
11. Washer, flat, .344" x .688" x .065", zinc..... **50-7034** \$0.26
12. Flange, manifold, X-Wedge (each)..... **16-0150** \$20.40
13. Seal, manifold, 2.060" x 2.285" x .0240" (each)..... **16-6601** \$4.85
  - 10 pack..... **106-0676** \$58.29
14. Sensor, kit, knock, IST, w/o bracket..... **55-1096** \$29.11
15. Sensor, temperature, cylinder head, 4 1/8"..... **55-1014** \$94.71
16. Gasket, head, .043", graphite
  - 4 1/8" (each)..... **93-1130** \$11.86
  - 4 1/4"..... **93-1131** \$11.02
  - 4 3/8" (each)..... **93-1132** \$25.74
17. O-ring, (-220), 1.375" ID x 1.625" OD, viton (each)..... **50-8245-S** \$2.36
18. Pushrod cover, set, X-Wedge..... **106-0698** \$74.42
19. Stud, 5/16-24, 7/16-14 x 2.44" (each)..... **50-0497** \$3.88
20. Retainer, Set, alignment, rocker arm support..... **106-0730** \$40.76
21. Rocker arm, set, X-Wedge..... **106-0716** \$58.29
22. Nut, Lock, HH, Gr8, 5/16-24 x 7/64", Zinc Plated, Steel (each)..... **106-1749** \$1.05
23. Washer, flat, .344" x .688" x .065", zinc..... **50-7034** \$0.26
24. O-ring, bottom, injector, .310" ID x .580" OD..... **50-8265-S** \$1.75
25. Fuel injector, assembly, style B, 31.3lbs/hr@58psi..... **55-5005** \$88.07
26. O-ring, top, injector, .290" ID x .570" OD..... **50-8264-S** \$1.89
27. Insulator, hold down, fuel injector (each)..... **106-1303** \$1.05
28. Clamp, front, hold-down, fuel injector..... **106-0578** \$62.93
30. Screw, SHC, 1/4-20 x 7/8, zinc..... **50-0025** \$0.52
31. Valve, bleed, 1/6-27 NPT..... **106-0755** \$22.95
32. Fuel line, cut to size, 5/16" x 12", black, rubber (each)..... **106-0159** \$13.86
33. Fuel line, cut to size, 5/16" x 2.250", black, rubber (each)..... **106-0157** \$7.61
34. Clamp, Hose, Stepless® Ear, 15.3mm..... **106-2250** \$2.19
35. Fitting, hose, tee, 5/16", black, glass filled, nylon (each)..... **106-0409** \$3.25
36. Rocker Cover Gasket (each)..... **39-0010A** \$14.37
  - 2 pack..... **106-0622** \$25.46
37. Rocker Cover (includes cover screw, washers and gasket(s))
  - Front or Rear..... **106-0600** \$231.72
  - Set..... **106-0593** \$405.01
38. Washer, Flat, .319" x .545" x .042", Zinc Steel (each)..... **50-7026** \$1.03
39. Screw, SHC, 5/16-18 x 1-7/8" Polished Chrome (10 pack)..... **106-1058** \$58.29

## .585" Lift Street Performance Valve Springs

40. Spring, valve, Sidewinder .585"..... **900-0550** \$5.83
41. Collar, top, valve spring, .585", steel..... **900-0444** \$26.23
42. Collar, bottom, valve spring, conical, .585", steel (each)..... **900-0600** \$6.92
43. Valve keeper (each)..... **90-2094-S** \$2.19
  - 8 pack..... **50-7166** \$15.65
44. Shim (for rebuild only)
  - .015" (each)..... **90-2086** \$1.05
  - 5 pack..... **50-7161** \$4.21
  - .030" (each)..... **90-2087** \$1.47
  - 5 pack..... **90-2198** \$6.76

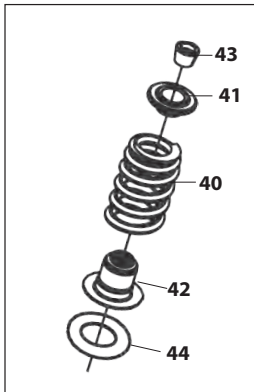
## .650" Lift Sidewinder® Valve Springs

45. Spring, Valve .650" (set of 4)..... **106-5927** \$132.60
46. Collar, Top, Steel..... **106-5690** \$6.19
47. Collar, Bottom, Steel (each)..... **106-3827** \$7.65
48. Valve Keeper
  - each..... **90-2094-S** \$2.19
  - 8 pack..... **50-7166** \$15.65
49. Shim
  - .015" (each)..... **500-0013** \$1.18
  - .030" (each)..... **500-0014** \$1.18

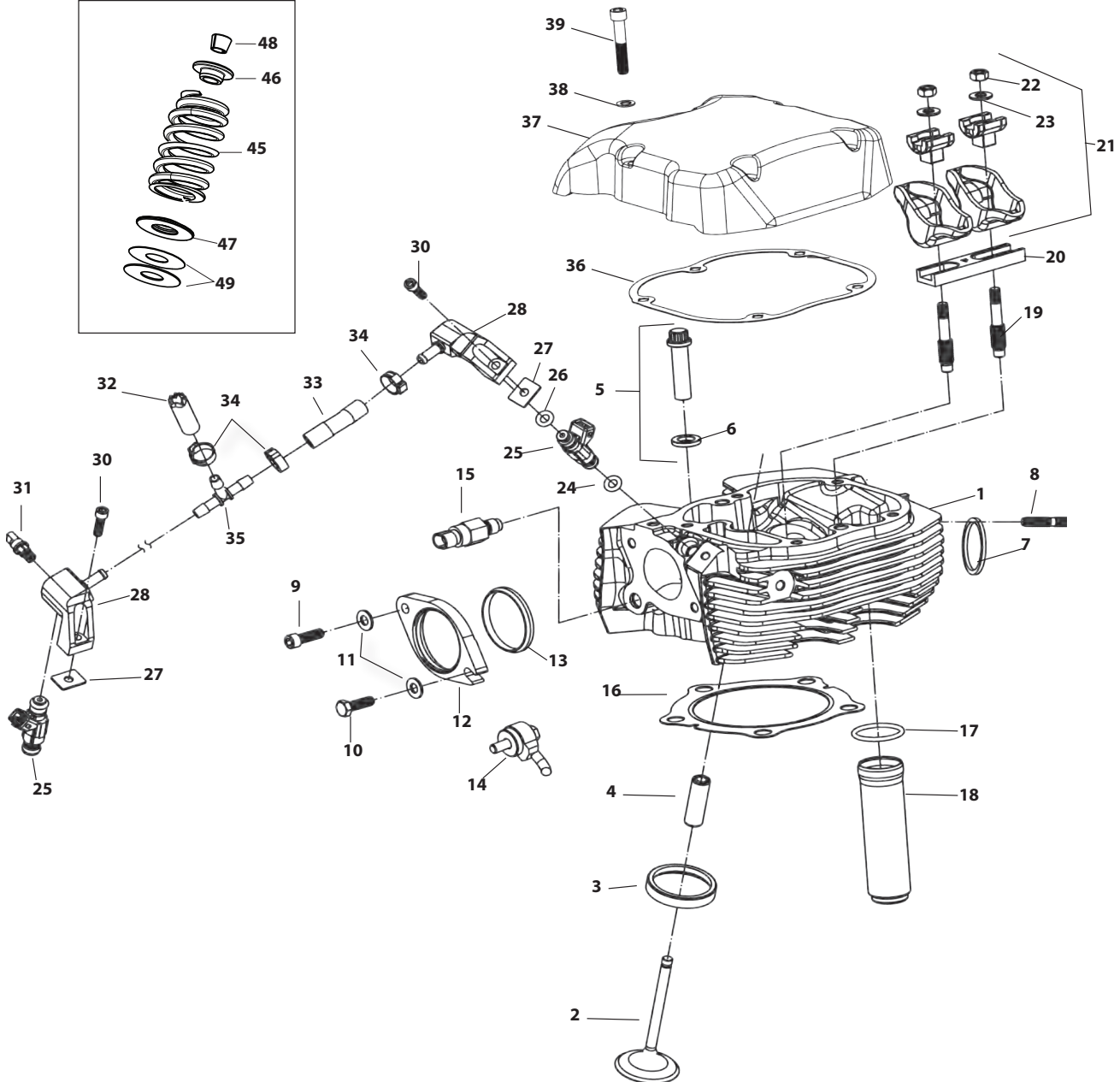
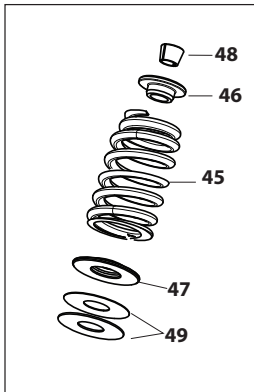
## GASKET KITS

Description	Bore Size	Part No.	MSRP
Top End Rebuild Kit	4 1/4"	<b>90-9701</b>	\$102.00
	4 3/8"	<b>106-1262</b>	\$93.33
Complete Engine Rebuild Kit	4 3/8"	<b>106-1030</b>	\$174.00
	4 1/4"	<b>106-1029</b>	\$174.00
	4 3/8"	<b>106-1031</b>	\$188.50

**.585" Lift Street Performance Valve Springs**



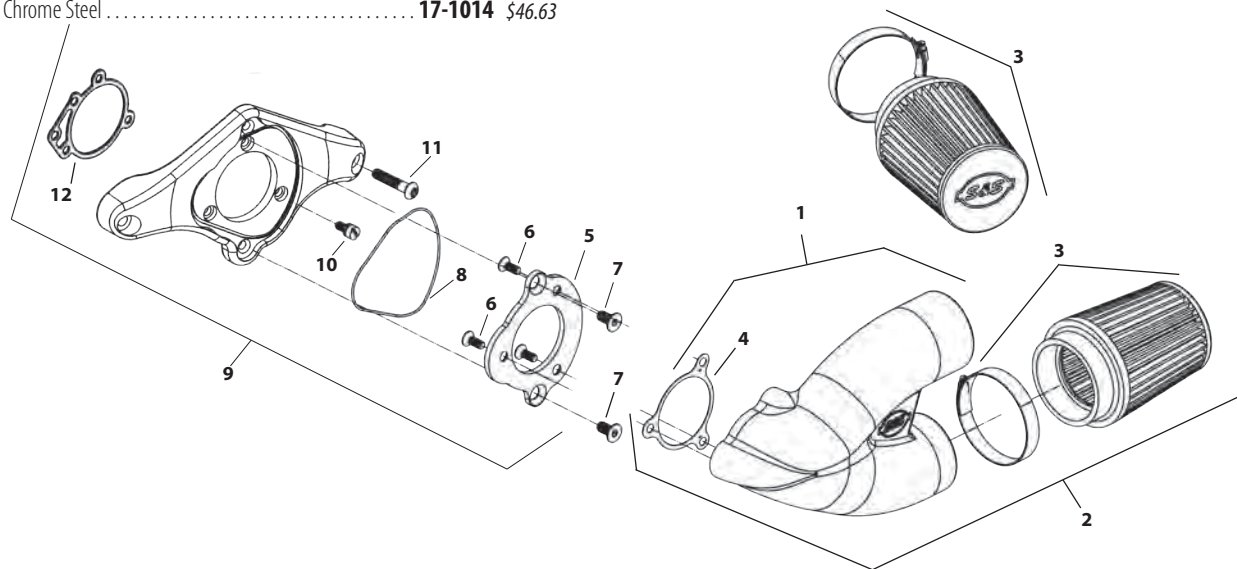
**.650" Lift Sidewinder® Valve Springs**



# SINGLE BORE TUNED INDUCTION SYSTEM REPLACEMENT PARTS

1. Tuned Intake Kit, 2.19" Single Bore  
Wrinkle Black.....**106-4966** \$260.94  
Chrome Plated.....**106-4967** \$271.38
2. Tuned Intake Assembly, 2.19" Single Bore  
Natural.....**106-4968** \$136.33  
Wrinkle Black.....**106-4969** \$150.16  
Chrome Plated.....**106-4970** \$167.42
3. Air Filter, with Clamp, Stainless Cap — Conical — 2 $\frac{1}{16}$ " I.D. x 4"  
Red.....**17-1020** \$54.00  
Blue (each).....**17-1023** \$54.00
4. Gasket, Intake — Adapter Plate, 2.19" Single Bore Tuned Intake  
.....**17-1022** \$1.60
5. Plate, Adapter, 2.19" Single Bore Tuned Intake  
Chrome Steel.....**17-1014** \$46.63

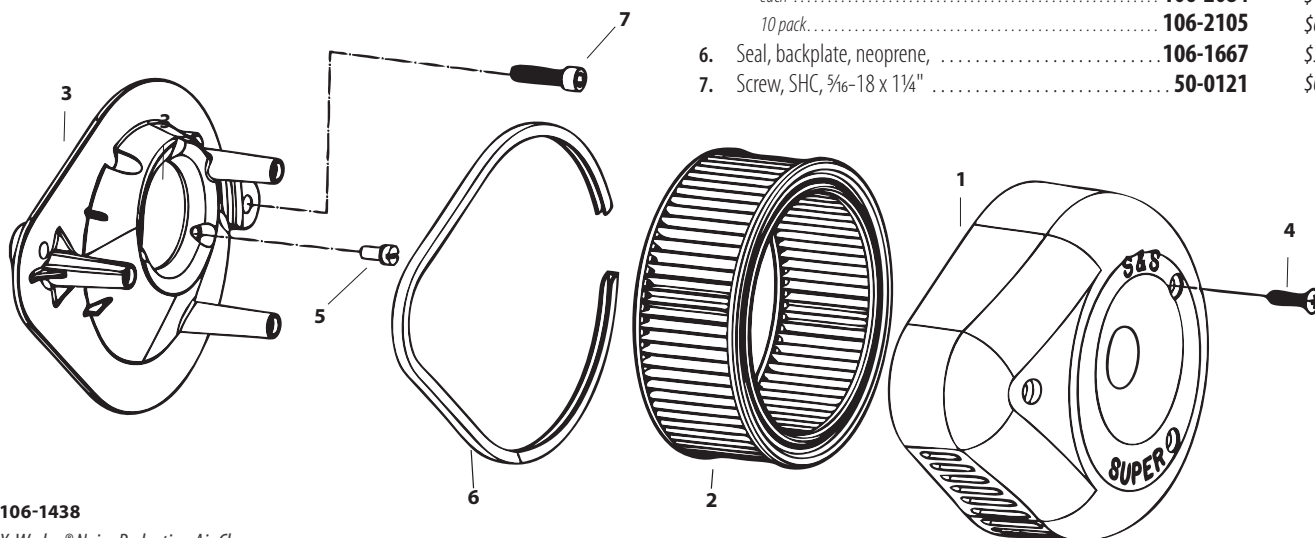
6. FHSC  $\frac{1}{4}$ -20 x  $\frac{5}{8}$ " (each).....**50-0433** \$2.46
7. FHSC  $\frac{5}{16}$ -18 x  $\frac{3}{4}$ " (each).....**50-0432** \$4.25
8. O-Ring, Adapter Plate Bracket, 3 $\frac{3}{8}$ " O.D. x 3 $\frac{1}{2}$ " I.D.  $\frac{1}{16}$  CS, Viton®  
each.....**50-0446** \$2.36
9. Bracket Kit, S&S X-Wedge®.....**106-4972** \$313.14
10. Backplate Screw LSHC Black Oxide (X-Wedge Only).....**106-0817** \$2.24
11. Screw, Button Head Cap Screw,  $\frac{5}{16}$ -18 x 1 $\frac{1}{2}$ " Grade 5, Chrome  
each.....**50-0309-S** \$4.76
12. Gasket, Backplate (each).....**106-1724** \$1.57  
10 pack.....**106-2328** \$13.87
13. Filter oil, 8oz. bottle (N/S)  
Red.....**106-1163** \$16.03  
Blue.....**106-1164** \$16.03



# TEARDROP AIR CLEANER REPLACEMENT PARTS FOR S&S® X-WEDGE®

1. Air Cleaner Cover  
Chrome, Slasher.....**17-0004** \$150.29
2. Element, pleated.....**106-4722** \$21.86
3. Backplate SBFFI.....**106-0568** \$87.02

4. Screw, oval  $\frac{1}{4}$ -20 x 1 (each).....**50-0072** \$1.03  
3 pack.....**50-1052** \$2.30  
10 pack.....**50-0094** \$7.46
5. Backplate screw, Zinc Plated  
each.....**106-2084** \$1.06  
10 pack.....**106-2105** \$6.83
6. Seal, backplate, neoprene,.....**106-1667** \$5.83
7. Screw, SHC,  $\frac{5}{16}$ -18 x 1 $\frac{1}{4}$ ".....**50-0121** \$0.57



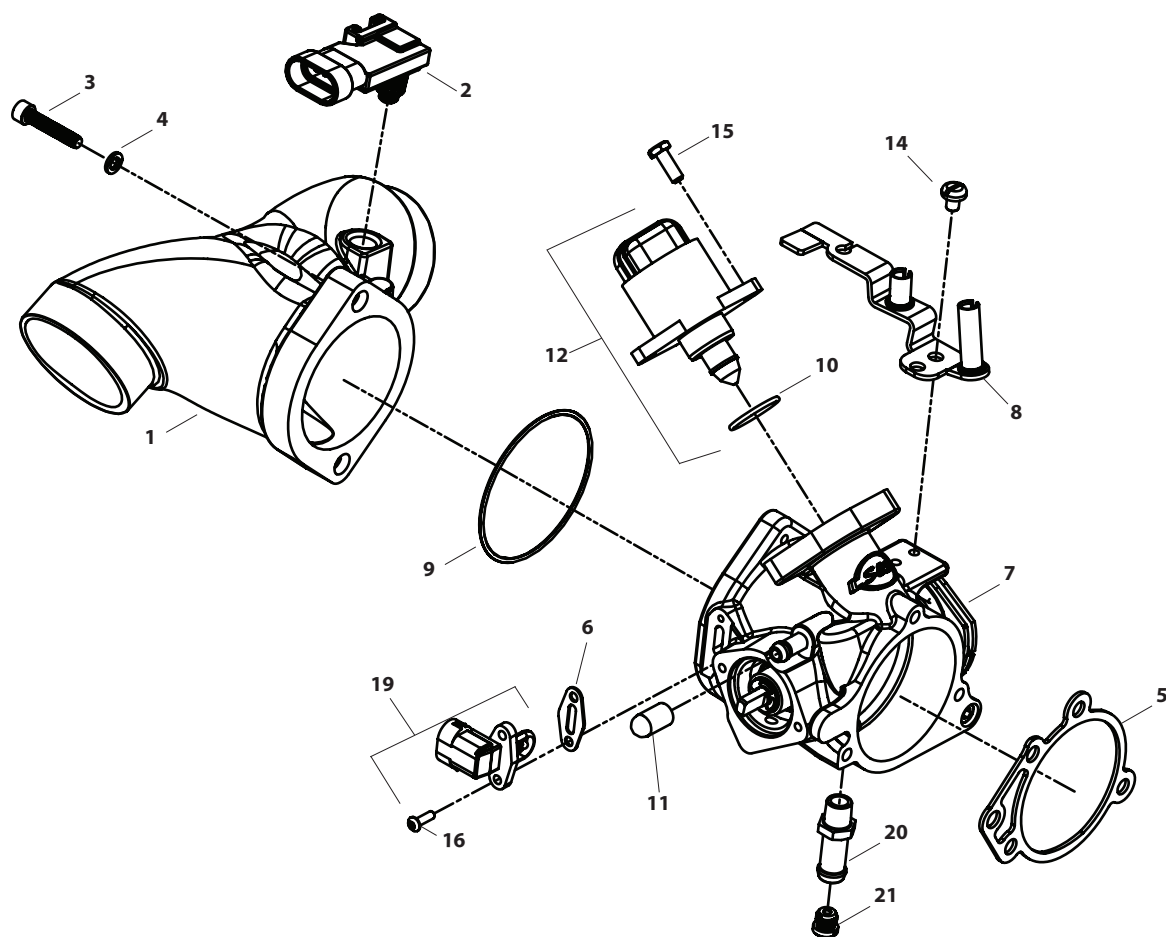
106-1438

X-Wedge® Noise Reduction Air Cleaner



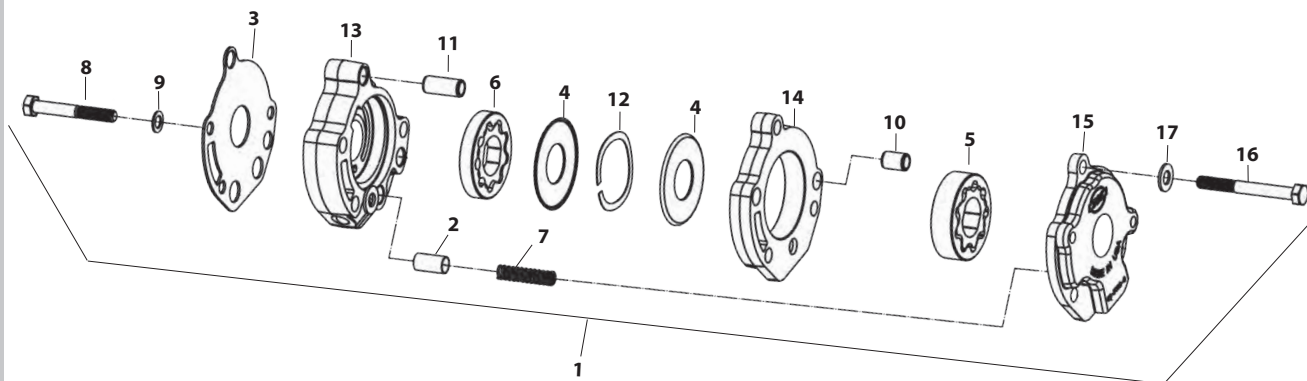
# THROTTLE BODY AND RELATED REPLACEMENT PARTS FOR X-WEDGE® ENGINES

- |   |                  |          |
|---|------------------|----------|
| 1. Manifold, SBEFI, 2 1/16", X-Wedge Natural                                  | <b>106-0674</b>  | \$143.06 |
| 2. Sensor kit, map, IST, w/VOES fitting                                       | <b>55-1037</b>   | \$49.95  |
| 3. Screw, SHSC, 10-24 x 1" (each)   | <b>50-0359-S</b> | \$1.03   |
| 4. Washer, lock, .200" x .334" x .047", zinc, steel                           | <b>50-7000</b>   | \$0.26   |
| 5. Gasket, backplate, Super E & G 52mm (each)                                 | <b>106-1724</b>  | \$1.57   |
| 10 pack   | <b>106-2328</b>  | \$13.87  |
| 58mm  | <b>106-4662</b>  | \$3.10   |
| 6. Gasket, Air Temperature Sensor, S&S® VFI                                   | <b>16-5009-S</b> | \$3.15   |
| 7. Throttle body, assembly, single bore, w/tps, natural 52mm                  | <b>106-3141</b>  | \$271.25 |
| 58mm  | <b>106-3960</b>  | \$271.96 |
| 8. Guide, throttle cable, w/hardware, X-Wedge                                 | <b>106-0634</b>  | \$28.28  |
| 9. O-ring, (-036), 2.364" ID x 2.504" OD, nitrile                             | <b>50-7967-S</b> | \$0.47   |
| 10. O-ring, (-018) .739" ID x .879" OD x .070, viton                          | <b>50-8149-S</b> | \$0.74   |
| 11. Cap, canister purge fitting (each)  | <b>50-8266-S</b> | \$4.09   |
| 12. Motor, kit, idle air control, EFI   | <b>55-5085</b>   | \$90.18  |
| 14. Screw, SLTD, PH, 10-24 x 1/4 (each)                                       | <b>50-0041</b>   | \$1.08   |
| 10 pack   | <b>50-0062</b>   | \$3.74   |
| 15. Screw, 10-24 x .500 trimmed HXHD m/s (each)                               | <b>50-0356-S</b> | \$1.05   |
| 16. Screw, torx, m3 x 10mm, zinc, steel                                       | <b>50-0357-S</b> | \$0.58   |
| 19. Sensor, kit, temperature, intake air                                      | <b>55-5041</b>   | \$15.21  |
| 20. Fitting, hose, straight, 1/8-27 NPTF x .375", w/ 1/16 T, zinc, steel each | <b>106-2981</b>  | \$10.87  |
| 21. Jet, Main, Series 72, .100" (each)  | <b>11-4100</b>   | \$8.07   |
| 5 pack  | <b>11-7250</b>   | \$36.66  |



# OIL PUMP REPLACEMENT PARTS FOR X-WEDGE® ENGINES

- |  |                  |          |   |                 |         |
|--|------------------|----------|---|-----------------|---------|
| 1. Oil pump, kit, X-Wedge.....                       | <b>106-0680</b>  | \$347.61 | 11. Dowel pin, .437" x 1" (each).....                             | <b>50-8284</b>  | \$2.91  |
| 2. Valve, pressure relief, X-Wedge.....              | <b>106-0774</b>  | \$11.66  | 12. Spring, wave, 1.60" x 2" x .085".....                         | <b>106-0773</b> | \$23.31 |
| 3. Plate, S&S oil pump, X-Wedge.....                 | <b>106-0694</b>  | \$9.79   | 13. Oil pump, body, supply, X-Wedge.....                          | <b>106-0679</b> | \$63.94 |
| 4. Plate, divider, S&S oil pump, X-Wedge (each)..... | <b>36-7005</b>   | \$28.28  | 14. Oil pump, body, return, X-Wedge (Includes dowel pin #11)..... | <b>106-0678</b> | \$70.25 |
| 5. Rotor, set, oil pump return, X-Wedge.....         | <b>106-0717</b>  | \$68.30  | 15. Cover, oil pump, return, X-Wedge.....                         | <b>106-0596</b> | \$40.87 |
| 6. Rotor, set, oil pump supply, X-Wedge.....         | <b>36-7021-S</b> | \$36.43  | 16. Screw, HHC, GR8, 5/16-18 x 3.....                             | <b>106-1694</b> | \$1.00  |
| 7. Spring, relief valve, X-Wedge (each).....         | <b>36-7041</b>   | \$2.04   | 17. Washer, flat, .344" x .688" x .065", zinc, steel.....         | <b>50-7034</b>  | \$0.26  |
| 8. Screw, HHC, 5/16-18 x 2 1/4 (each).....           | <b>50-0462</b>   | \$1.05   |   |                 |         |
| 9. Washer, flat, zinc, .319" (each).....             | <b>50-7026</b>   | \$1.03   |   |                 |         |
| 10. Dowel pin, .437" diameter x .610" (each).....    | <b>50-8177</b>   | \$2.26   |   |                 |         |
| 4 pack.....  | <b>50-8177-4</b> | \$8.23   |   |                 |         |



# OIL FILTER BRACKET REPLACEMENT PARTS FOR S&S® X-WEDGE® ENGINE

- |   |                  |          |
|---|------------------|----------|
| 1. Bracket, oil filter, X-Wedge                         |                  |          |
| Polished.....   | <b>106-0572</b>  | \$109.29 |
| Silver.....   | <b>106-0573</b>  | \$100.54 |
| Wrinkle black.....                                      | <b>106-0574</b>  | \$100.54 |
| 2. O-ring, Viton, -017.....                             | <b>50-0466</b>   | \$1.15   |
| 3. O-ring, Viton, size -022 (each).....                 | <b>50-8005</b>   | \$1.25   |
| 4. Switch, oil pressure, packaged, X-Wedge.....         | <b>106-0744</b>  | \$20.94  |
| 5. Fitting, straight, 3/4-16 UNF 2a (each).....         | <b>50-8197-S</b> | \$6.46   |
| 6. Screw, SHC, 5/16-18 x 1, zinc.....                   | <b>50-0101</b>   | \$0.57   |
| 7. Washer, flat, 5/16 x 1 1/16 x 3/16, zinc, steel..... | <b>50-7034</b>   | \$0.26   |

