



### ***Performance Parts***

Air Cleaners .....	10
Camshafts .....	8
Exhaust .....	12
Gaskets .....	15
Oil .....	15
Oil Filters .....	15
Pushrods.....	9
Tappets .....	9

### ***Replacement Parts ..... 16***



# CAM KITS

**FITMENT**

- 2017 Harley-Davidson® touring models with Milwaukee Eight engine

**FEATURES AND BENEFITS**

- 465C chain drive and 465G gear drive cams both provide increased torque and horsepower
- 350G gear drive cam has stock specs, but eliminates cam drive chain and tensioner
- Kits include all required bearings, o-rings and hardware
- Gear drive cams provide improved valve timing accuracy
- Made in the USA



S&S® CAMSHAFT SPECIFICATIONS											
Cam Name	Cylinder	Valve Timing		Valve Duration		Valve Lift		Lobe Center Line		Valve Lift @ TDC	
		Intake	Exhaust	Intake	Exhaust	Intake	Exhaust	Intake	Exhaust	Intake	Exhaust
		Open BTDC/ Close ABDC	Open BBDC/ Close ATDC								
350G Stock Grind Gear Drive	Both	-7.0/1.0	33.0/-14.0	174.0	199.0	.350	.374	94.0	113.5	.057	.048
465C Performance Chain Drive	Front	2.6/14.6	30.1/8.8	197.2	218.9	.462	.462	96.0	100.6	.087	.109
	Rear	2.8/14.4	33.1/5.8	197.2	218.9	.462	.462	95.8	103.6	.088	.098
465G Performance Gear Drive	Front	2.6/14.6	30.1/8.8	197.2	218.9	.462	.462	96.0	100.6	.087	.109
	Rear	2.8/14.4	33.1/5.8	197.2	218.9	.462	.462	95.8	103.6	.088	.098

Description	Part #	MSRP
350G Stock Grind Gear Drive	<b>330-0625</b>	\$380.00
465C Performance Chain Drive	<b>330-0620</b>	\$190.00
465G Performance Gear Drive	<b>330-0624</b>	\$380.00

DISCLAIMER: NOT LEGAL FOR SALE OR USE IN CALIFORNIA ON ANY POLLUTION CONTROLLED MOTOR VEHICLE. Not legal for sale or use on any EPA pollution controlled motor vehicle.



All reference to H-D® part numbers is for identification purposes only. We in no way are implying that any of S&S Cycle's products are original equipment parts or that they are equivalent to the corresponding H-D® part number shown.

# PREMIUM HIGH PERFORMANCE TAPPETS

## FITMENT

- 2017 big twins with the Milwaukee-Eight® engine

## FEATURES

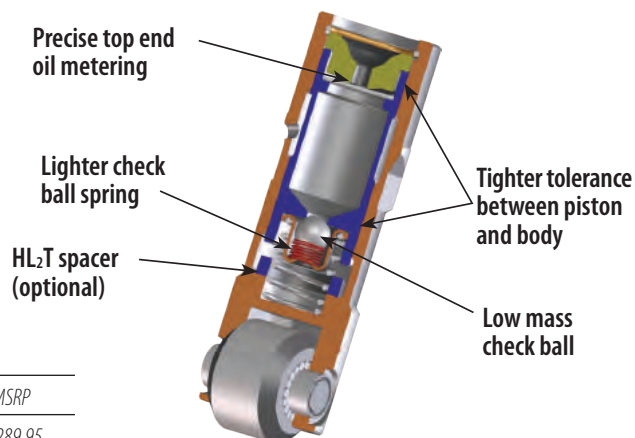
- Reduced valve train noise from start up to shut down
- Close tolerances for low leak down rates – *fast pump up and superior high rpm performance*
- Low mass, bearing grade, silicon nitride check ball and lighter check ball spring – *enhances fast pump up and quiet operation*
- 100% tested to ensure that leak down and top end oil flow are within specification



330-0174

### S&S PREMIUM HIGH PERFORMANCE TAPPETS

Tappet Sets	Part No.	MSRP
Set of 4 tappets with HL <sub>2</sub> T kit	<b>330-0174</b>	\$289.95
Set of 4 tappets without HL <sub>2</sub> T kit	<b>330-0175</b>	\$269.95



# HIGH PERFORMANCE HYDRAULIC TAPPETS

## FITMENT

- 1999–'17 big twins
- S&S T-Series engines



### S&S® HIGH PERFORMANCE HYDRAULIC TAPPET SETS

Description	Part No.	MSRP
Standard Tappet Set (4)	<b>33-5350</b> 18538-99A, 18538-99B, 18538-99C	\$129.95

\*S&S tappets with HL<sub>2</sub>T Kit require the use of adjustable pushrods.

# QUICKEE ADJUSTABLE PUSHRODS

## FITMENT

- 2017 big twins with the Milwaukee-Eight® engine

## FEATURES AND BENEFITS

- Adjustable to accommodate all tappets and cam base circle diameters and engine heights
- Easy to install – removal of rocker box not needed
- Perfect for S&S HL<sub>2</sub>T
- No threads on wrench flats

## KIT CONTENTS

- Pushrods, chrome pushrod covers, o-rings, and cover keepers



When a Quickee adjustable pushrod is collapsed, it can easily be installed or removed from an assembled engine.

### S&S® QUICKEE ADJUSTABLE PUSHRODS

Description	Part No.	MSRP
Pushrods Only	<b>93-5122</b>	\$159.95
Pushrod Kit (includes chrome pushrod covers, o-rings & cover keepers)	<b>930-0123</b>	\$224.95

### S&S® PUSHROD COVER KEEPER SET FOR 2017 BIG TWINS WITH THE MILWAUKEE-EIGHT® ENGINE

Description	Part No.	MSRP
Pushrod Cover Kit	<b>106-1340</b>	\$146.12
2.200"	<b>930-0129</b>	\$27.95



# STEALTH AIR CLEANER KITS

## FITMENT

- 2017 Harley-Davidson® models with the Milwaukee-Eight® engine

## FEATURES AND BENEFITS

- Use with your stock Harley-Davidson® Milwaukee-Eight® engine air cleaner cover (Adapter required –see below)
- Can also be used with any S&S Stealth cover (see page 11)
- High flow (1" taller) filter kit available (P/N 170-0127\*)
- Backplate made from high-strength advanced synthetic polymer –reduces heat transfer to intake air
- Cooler, denser air allows for more efficient cylinder fill and better performance
- Included actuator cover, hides TBW servo motor for a clean, attractive installation
- Exempt from emissions tampering regulations under CARB EO# D-355-21



## S&S STEALTH AIR CLEANER KITS

Description	Part No.	MSRP
Stealth Air Cleaner Kit for Stock M8 Throttle Body	<b>170-0354</b>	\$159.95
Stealth Kit (170-0354) plus Chrome Airstream cover	<b>170-0390</b>	\$299.95
Stealth Kit (170-0354) plus Black Airstream cover	<b>170-0391</b>	\$299.95
Stealth Kit (170-0354) plus Tri-Spoke cover	<b>170-0392</b>	\$299.95
Stealth Kit (170-0354) plus Torker cover	<b>170-0393</b>	\$299.95
Stealth Kit (170-0354) plus Air 1 cover	<b>170-0394</b>	\$299.95
Adapter for Stock M8 Air Cleaner Cover	<b>170-0352</b>	\$49.95

Exempt from emissions tampering regulations under CARB EO# D-355-21



**CARB**  
compliant  
EO #D-355-21



The S&S Stealth air cleaner backplate in this kit is made from the same high-strength, advanced, synthetic polymers used in high performance automotive intake manifolds and high-end handgun bodies! This material offers superior mechanical properties, thermal stability, and chemical resistance. Designed to reduce heat transfer to the intake air for more efficient induction

# STEALTH AIR CLEANER KIT COVERS



Air 1



Tri-Spoke



Torker



Airstream



Muscle



Bobber-dished

## S&S STEALTH COVERS

Style	Finish	Part No.	MSRP
Tri-Spoke	Gloss Black with Highlights	<b>170-0210</b>	\$141.78
Torker	Gloss Black with Highlights	<b>170-0206</b>	\$141.78
Air 1	Gloss Black with Highlights	<b>170-0214</b>	\$141.78
Airstream	Chrome	<b>170-0118</b>	\$142.80
	WBlack	<b>170-0122</b>	\$142.80
Muscle	Chrome	<b>170-0121</b>	\$137.66
	WBlack	<b>170-0125</b>	\$132.57
	WBlack with Highlighted Logo	<b>170-0190</b>	\$137.66
Bobber-Dished	Chrome	<b>170-0119</b>	\$96.83
	WBlack	<b>170-0123</b>	\$96.83
Bobber-Domed	Chrome	<b>170-0120</b>	\$96.83
	WBlack	<b>170-0124</b>	\$96.83



# MK45 TOURING MUFFLERS

S&S Cycle's popular Mk45 4.5" slip-on touring mufflers are now available for 2017 Harley-Davidson® touring models with the new Milwaukee Eight® engine. These mufflers are SAE J2825 compliant and 50-state legal.

**FITMENT**

- 2017 Harley-Davidson® touring models with Milwaukee Eight engine  
*Does not fit Trike or Freewheeler models*

**FEATURES AND BENEFITS**

- Bold 4.5" design — with stainless steel baffle and fiberglass packing
- Available in show quality chrome or black ceramic finish
- Choose from S&S Thruster or Tracer end-cap designs in chrome or black
- SAE J2825 Compliant — 50-state legal
- Removable dB reducer to tune for street or strip



**S&S® Mk45 4.5" SLIP-ON MUFFLERS**

Muffler Body Finish	End Cap Finish & Style	Part No.	MSRP
Chrome	Chrome Thruster	<b>550-0665</b>	\$699.95
	Black Contrast Cut Thruster	<b>550-0664</b>	\$699.95
	Chrome Tracer	<b>550-0669</b>	\$699.95
	Black Contrast Cut Tracer	<b>550-0668</b>	\$699.95
Black	Chrome Thruster	<b>550-0667</b>	\$739.95
	Black Contrast Cut Thruster	<b>550-0666</b>	\$739.95
	Chrome Tracer	<b>550-0671</b>	\$739.95
	Black Contrast Cut Tracer	<b>550-0670</b>	\$739.95



550-0665



550-0664



550-0669



550-0668



550-0667



550-0666



550-0671



550-0670

**NOTE**

\*Qualified manufacturer declared U.S. 50-State legal emissions replacement part on all 2017 FL Touring models

# 4" GRAND NATIONAL SLIP-ONS

## FITMENT

- 2017 FLH Touring Models

## FEATURES AND BENEFITS

- Show quality chrome or black ceramic finish
- Race inspired Grand National end cap, or all-steel slash-cut end
- High flowing perforated baffle design with removable dB reducer
- Bolts directly to stock header pipes or S&S Power Tune duals
- Aggressive sound and excellent horsepower
- Made in the USA!
- 50-state legal



# Grand National

## S&S® 4" GRAND NATIONAL MUFFLERS FOR 2017 TOURING M8 ENGINES EXCEPT TRIKE MODELS

Grand National End Cap/Chrome	<b>550-0693</b>	\$499.95
Grand National End Cap/Black	<b>550-0694</b>	\$539.95
Slash-Down/Chrome	<b>550-0695</b>	\$459.95
Slash-Down/Black	<b>550-0696</b>	\$499.95

DISCLAIMER: NOT LEGAL FOR SALE OR USE IN CALIFORNIA ON ANY POLLUTION CONTROLLED MOTOR VEHICLES. Not legal for sale or use on EPA pollution controlled motorcycles originally equipped with mufflers containing catalyst. \*Qualified manufacturer declared emissions replacement part on the FL touring models listed below. California FL Touring Models: Fuel Injected MY 1995-2003, 2007, and 2009-2016; CVO MY 2000-2003, and 2009-2016, 49 State FL touring Models: Carbureted MY 1995-2005; Fuel Injected MY 1995-2005, and 2007-2016; CVO MY 2000-2005, and 2009-2016

# 49-STATE EXHAUST

## FEATURES AND BENEFITS

- Improved power and torque
- Available in Show Chrome or Black Ceramic Finish
- Two popular end cap styles available—Contrast Cut Thruster or Tracer
- O2 sensor location same as stock
- Includes adapters for wide band O2 sensors
- Stainless steel header construction
- Uses Two High Flow Cats to increase exhaust flow while providing just the right amount of back pressure for optimum torque
- Produces a deep throaty exhaust note throughout the RPM range
- Relocation of cats to mufflers reduces heat on rider

### 49-STATE EXHAUST SYSTEM FOR 2017-UP TOURING MODELS

Description	Finish	End Cap	Part #	MSRP
Exhaust System	Chrome	Contrast Cut Thruster	<b>550-0699</b>	\$1,250.00
Exhaust System	Black	Contrast Cut Thruster	<b>550-0700</b>	\$1,375.00
Exhaust System	Chrome	Contrast Cut Tracer	<b>550-0701</b>	\$1,250.00
Exhaust System	Black	Contrast Cut Tracer	<b>550-0702</b>	\$1,375.00

DISCLAIMER: NOT LEGAL FOR SALE OR USE IN CALIFORNIA ON ANY POLLUTION CONTROLLED MOTOR VEHICLE

\*Qualified Manufacturer Declared 49-State Emissions Compliant Catalyst Exhaust System



**Black w/Tracer**



**Black w/Thruster**



**Chrome w/Thruster**



**Chrome w/Tracer**



# S&S® OIL

## FEATURES AND BENEFITS

- Ultimate protection
- Superior lubrication for reduced engine wear and lower oil temperatures
- Provides consistent viscosity, and resists thermal breakdown and oxidation at elevated temperatures

### S&S® OIL

Description	Part #	MSRP
20W50 Synthetic, 1 quart	<b>3601-0407</b>	\$14.95
20W50 Synthetic, 2.5 Gallon	<b>3601-0408</b>	\$139.95
Primary, Synthetic, 1 quart	<b>3603-0044</b>	\$14.95
80W140 Gear, Synthetic, 1 quart	<b>3604-0007</b>	\$14.95



# OIL FILTERS

## FEATURES AND BENEFITS

- Captures smaller particles than stock filters
- Low restriction to oil flow
- Direct bypass – bypass oil does not pass over dirty filter media
- Smaller diameter for easier installation
- Black or chrome finish

### S&S® OIL FILTERS

Year Application	Micron Rating	QTY	Chrome	MSRP	Black	MSRP
1999-'17* Twin Cam 88®/96™/103™ and Milwaukee-Eight® engines	10µ	each	<b>31-4104</b> 63798-99A	\$16.03	<b>31-4103</b> 63731-99A	\$13.11
		12 pack	<b>310-0242</b> 63798-99A	\$188.50	<b>310-0241</b> 63731-99A	\$141.34

\* Contains an anti-drain back valve



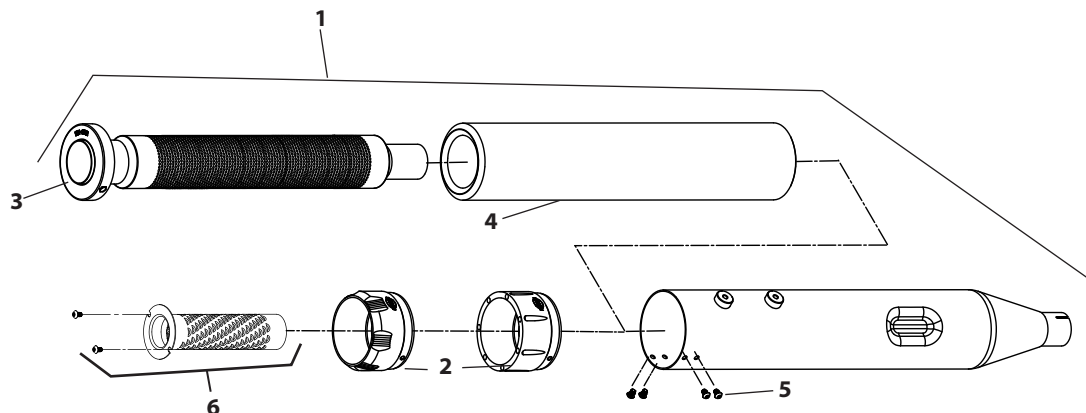
# GASKETS

## GASKETS

Cam Cover		<b>310-0911</b>	\$14.95
Exhaust Gaskets	each	<b>106-5029</b>	\$5.03
	10 pack	<b>93-1072</b>	\$44.43

# Mk45 4½" MUFFLER REPLACEMENT PARTS

1. 4.5" Muffler assembly for 2017 Models
  - Left, chrome.....**551-0149** *Call for Pricing*
  - Right chrome.....**551-0150** *Call for Pricing*
  - Left black.....**551-0151** *Call for Pricing*
  - Right black.....**551-0152** *Call for Pricing*
2. End cap
  - Thruster chrome.....**550-0634** *Call for Pricing*
  - Thruster contrast cut.....**550-0629** *Call for Pricing*
  - Tracer chrome.....**550-0636** *Call for Pricing*
  - Tracer contrast cut.....**550-0632** *Call for Pricing*
3. Main baffle assembly, 4.5" muffler for 2017 Models
  - Left.....**551-0007** *Call for Pricing*
  - Right.....**551-0138** *Call for Pricing*
4. Insulation, 4.5" muffler.....**551-0003** *Call for Pricing*
5. Button head cap screw, Stainless, ¼"-20 x 3/8".....**500-0441** *Call for Pricing*
6. Baffle, Assembly, Muffler, SAE J2825.....**551-0026** *Call for Pricing*
7. Hardware kit, muffler clamps and screws (N/S) 2017 Models
  - Left.....**551-0027** *\$15.30*
  - Right.....**551-0148** *Call for Pricing*



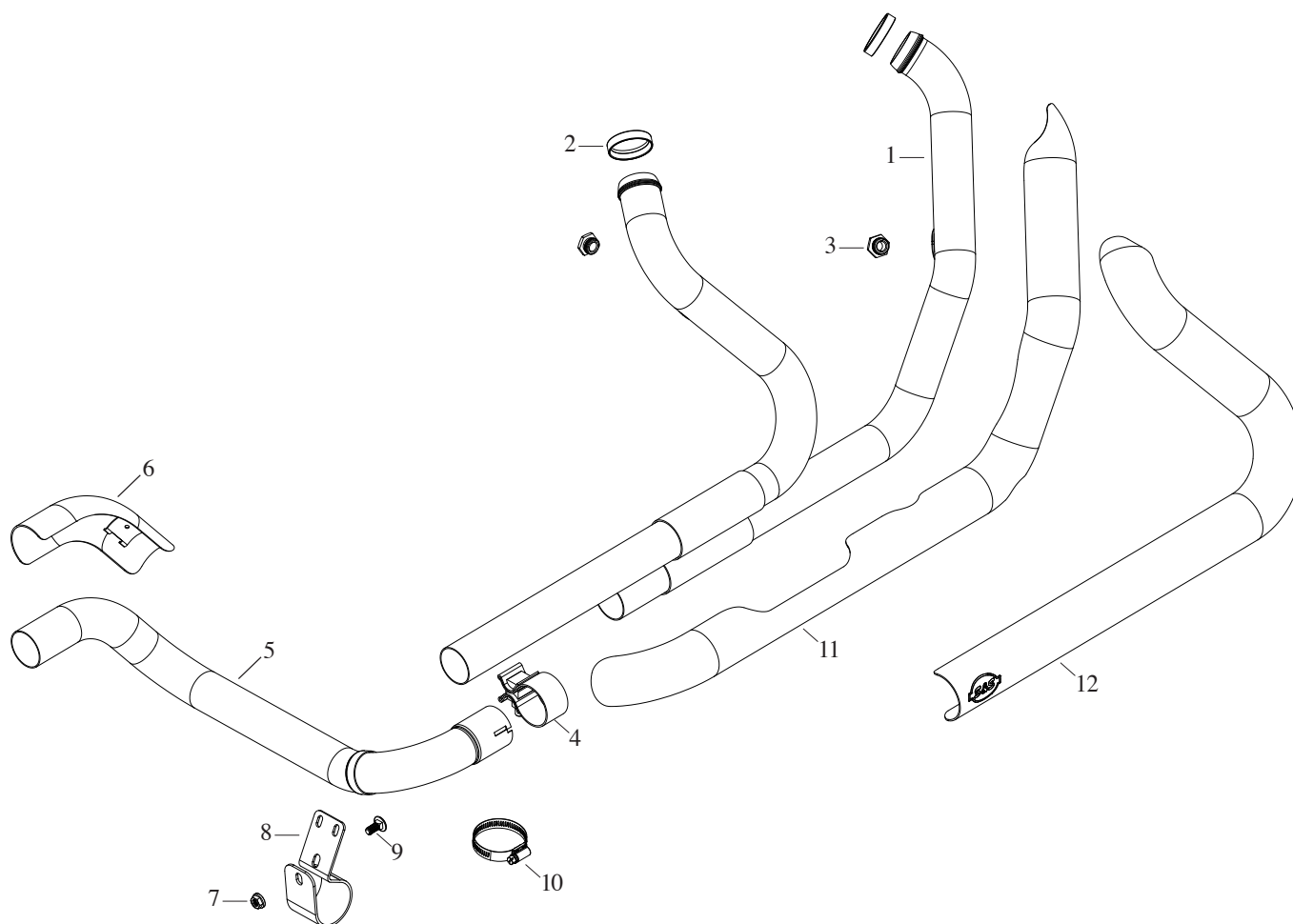
# POWER TUNE DUAL HEADER REPLACEMENT PARTS

- |  |                  |                  |
|--|------------------|------------------|
| 1. Pipe, header, power tune dual, header pipe weldment .....           | <b>551-0198</b>  | Call For Pricing |
| 2. Gasket, exhaust, tapered, stainless steel, (2 Req).....             | <b>106-5029</b>  | \$5.03           |
| 3. Adapter, oxygen sensor, 12mm to 18mm, stainless steel (2 Req) ..... | <b>550-0375</b>  | \$11.95          |
| 4. Clamp, muffler, band style .....                                    | <b>551-0028</b>  | Call For Pricing |
| 5. Tube, crossover, power tune dual, formed, .....                     | <b>551-0229</b>  | Call For Pricing |
| 6. Shield, left, power tune dual,                                      |                  |                  |
| Chrome .....   | <b>551-0115</b>  | \$72.32          |
| Black .....  | <b>551-0116</b>  | \$100.33         |
| 7. Nut, HSFH, 5/16-18 UNC-2b x .283", Zinc, steel .....                | <b>50-5053-S</b> | \$0.17           |
| 8. Clamp, p-style, crossover, power tune dual header .....             | <b>551-0121</b>  | Call For Pricing |
| 9. Bolt, carriage, 5/16"-18 x 3/4" .....                               | <b>500-0555</b>  | \$0.36           |
| 10. Clamp, hose (8 Req) .....  | <b>551-0124</b>  | \$1.50           |
| 11. Shield, front, power tune dual,                                    |                  |                  |
| Chrome .....   | <b>551-0206</b>  | Call For Pricing |
| Black .....  | <b>551-0207</b>  | Call For Pricing |
| 12. Shield, rear, power tune dual,                                     |                  |                  |
| Chrome .....   | <b>551-0213</b>  | Call For Pricing |
| Black .....  | <b>551-0214</b>  | Call For Pricing |

## Not Shown

Hardware kit, power tune dual, header

Includes items 2, 3, 4, 7, 8, and 9 ..... **551-0215** \$70.71





# 4" GRAND NATIONAL MUFFLERS REPLACEMENT PARTS

1. 4" Muffler assembly with Grand National end cap		
Left, Chrome.....	<b>551-0181</b>	\$307.14
Right, Chrome.....	<b>551-0180</b>	\$313.16
Left, Black.....	<b>551-0183</b>	\$367.75
Right, Black.....	<b>551-0182</b>	\$373.76
2. 4" Muffler assembly Slash Down		
Left, Chrome.....	<b>551-0185</b>	\$317.71
Right, Chrome.....	<b>551-0184</b>	\$326.23
Left, Black.....	<b>551-0187</b>	\$393.03
Right, Black.....	<b>551-0186</b>	\$401.55
3. End Cap (Left and Right).....	<b>551-0188</b>	\$25.00
4. Main baffle assembly		
Left.....	<b>551-0053</b>	\$60.00
Right.....	<b>551-0132</b>	\$51.54
5. dB reducer baffle (Left and Right).....	<b>551-0063</b>	\$22.75
6. Button head cap screw, Stainless, 1/4"-20x3/8".....	<b>500-0441</b>	\$0.80
7. Socket head cap screw, Stainless, 10-32x3/4".....	<b>500-0569</b>	\$1.50
8. Button head cap screw, Stainless, 10-32x3/8".....	<b>500-0570</b>	\$1.75
9. Hardware kit, muffler clamps and screws (N/S).....	<b>551-0027</b>	\$15.30

